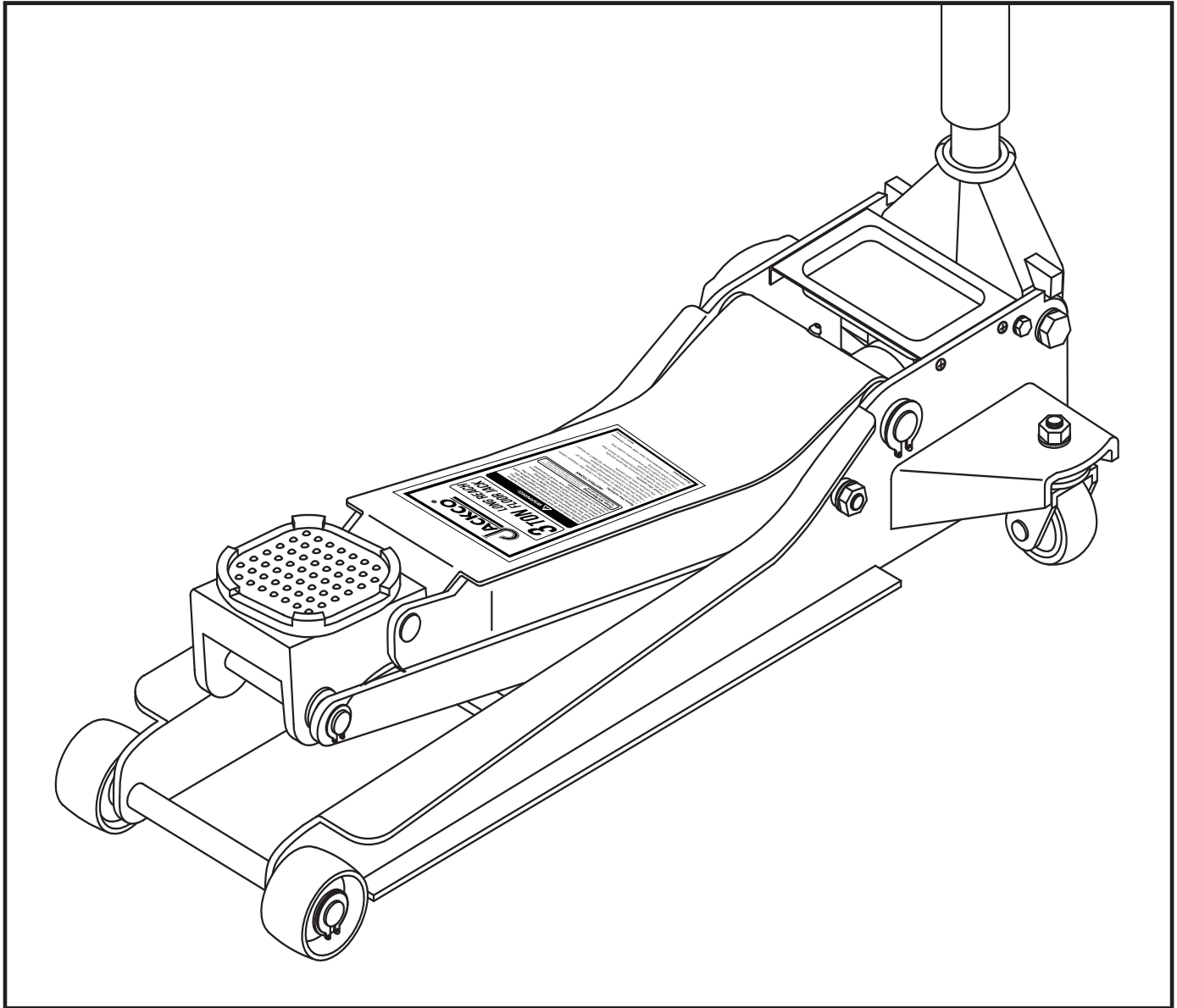




Model 66305 - 3 Ton Long Reach Floor Jack

Max. Capacity: 3 Tons

Application: Designed to lift a wide range of motor vehicles.



⚠ WARNING

Read this material before using this product. Failure to do so can result in serious injury. The owner and/or operator shall have an understanding of the product, its operating characteristics, and safety operating instructions before operating the PALD. Safety information shall be emphasized and understood. If the operator is not fluent in English, the product and safety instructions shall be read to and discussed with the operator in the operator's native language by the purchaser/ owner or his designee, making sure their operator comprehends their contents. **SAVE THIS MANUAL.**

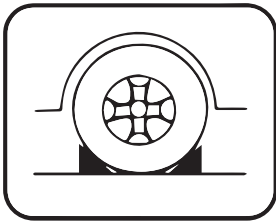
Visit our website at: www.jackco.com
Email our technical support at: techsupport@jackco.com

Ver. 0722

⚠ WARNING: Cancer
and Reproductive Harm
www.P65Warnings.ca.gov

For Your Safety

- Read these safety instructions carefully and keep this manual in an easy to find place as you may need to use it again.
- Non-compliance with these rules may result in injury or damage to the jack or vehicle.
- Do not modify the jack in any way.
- Never exceed the rated capacity of the jack.
- This jack is a lifting device only and should never be used to move the vehicle.
- The jack should be supported on a solid and level ground. Never use the jack in a surface where it may sink into the ground.
- Ensure that there are no persons inside the vehicle to be lifted. Switch off the engine and apply the brake.
- Position the jack under the manufacturer's recommended lifting point for the vehicle. Off-centered loads can slip and accidents may result.
- During raising and lowering of the load, precautions should be taken to avoid movement of the vehicle.
- Traffic may cause the raised vehicle to rock during roadside use of the jack.
- Never work under a raised vehicle without supporting it with mechanical/jack stands.
- Never position any part of your body near the movable parts of the jack.
- Ensure that there are no persons or obstructions underneath the vehicle prior to lowering.
- Do not adjust the overload bypass valve under any circumstance.
- Never move the jack under load. Doing so may risk property and/or personal injury even death.



Use wheel chocks appropriately.

Specifications

Capacity:	3 ton	Saddle Diameter :	4 in
Min Height :	3.25 in	Strokes to Max Height:	8
Max Height :	24.1875 in	Net Weight :	101 lbs.
Dimension:	32.5 in (L) x 14.5 in (W)		

Prior to Operation

Air may become trapped in the hydraulic system during transit

To Purge Air

1. Insert the handle into the socket and secure it with the set screw provided.
2. Turn the handle counterclockwise until release valve is open, pump the jack several times to purge the accumulated air in the system .
3. Turn the handle clockwise to close the release valve. The jack is now ready to use.

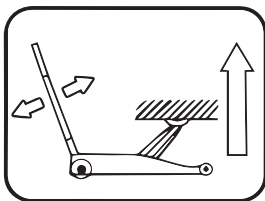
Assembly

Please refer to the exploded view drawing in this manual in order to identify parts:

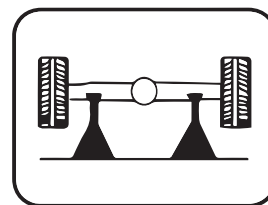
1. Assemble the two handle halves together by depressing the spring-loaded button on the knurled handle section (#17) and inserting the upper handle section into the lower section (#18). The spring-loaded button should engage with the hole in the lower handle section.
2. Grease the inside of the handle yoke (#21) and remove the handle set screw (#20).
3. Install the handle assembly in the handle yoke until the bottom of the handle engages with the universal joint assembly (#30).
4. Reinstall the handle set screw in the handle yoke making sure the screw secures the handle to the handle yoke. Tighten the screw.
5. Air may become trapped in the hydraulic system during shipping and handling. Trapped air will affect the pumping performance of the jack. If this occurs, follow the air pumping procedure below:
 - a) Remove the four screws that secure the cover plate (#27) to the jack frame (#4) so the oil filler screw can be removed from the hydraulic power unit reservoir tube.
 - b) With the lift arm in its down position, look inside the oil fill screw hole. You should be able to see the top of the power unit's cylinder. The hydraulic fluid level should be no higher than the top of the cylinder. Correct the fluid level if it is not at the proper height.
 - c) Pump the jack against a load that is at least 500 lbs. (225 Kgs).
After the load is raised, slightly turn the lift handle in a counterclockwise rotation so the load is very slowly lowered. While the lift arm is lowering, quickly pump the lift handle 5 or 6 full incremental pump strokes. After pumping, lower the lift arm to its full rest position.
 - d) Install the oil fill screw. Rotate the handle in a clockwise rotation until tight and pump the lift arm to maximum height.
If the pumping condition has improved, repeat steps "a" through "d" until all of the air has been purged from the system.
- d) Install the cover plate (#27) with the four screws.

Operating Instructions

To Lift a Vehicle:



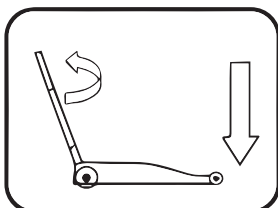
Turn the handle clockwise.
Move the handle up and down.
Use the full stroke of the piston for greater speed



Support the vehicle with appropriate jack stands.

⚠ For Your Safety, never move the jack under load. Doing so may risk property and/or personal injury even death.

To Lower a Vehicle:



Lift the vehicle to remove the jack stands, ensuring that there are no persons or obstructions under the vehicle.
Turn the handle counter-clockwise

Maintenance

Important: Both the maintenance and repair of the jack may only be performed by qualified persons, who have sufficient knowledge of the hydraulic system used in these jacks.



Lubrication:

Put grease in fitting on base. Regularly lubricate the moving parts in the wheels, arms, handle and pump roller pin ever 3 months.

- Only original replacement parts should be used.

Extremely Important: When adding or replacing oil, always use a good grade of hydraulic jack oil. Never use brake fluid, alcohol, glycerine, detergent motor oil or dirty oil of any kind. Improper oil usage will cause serious damage to jack.

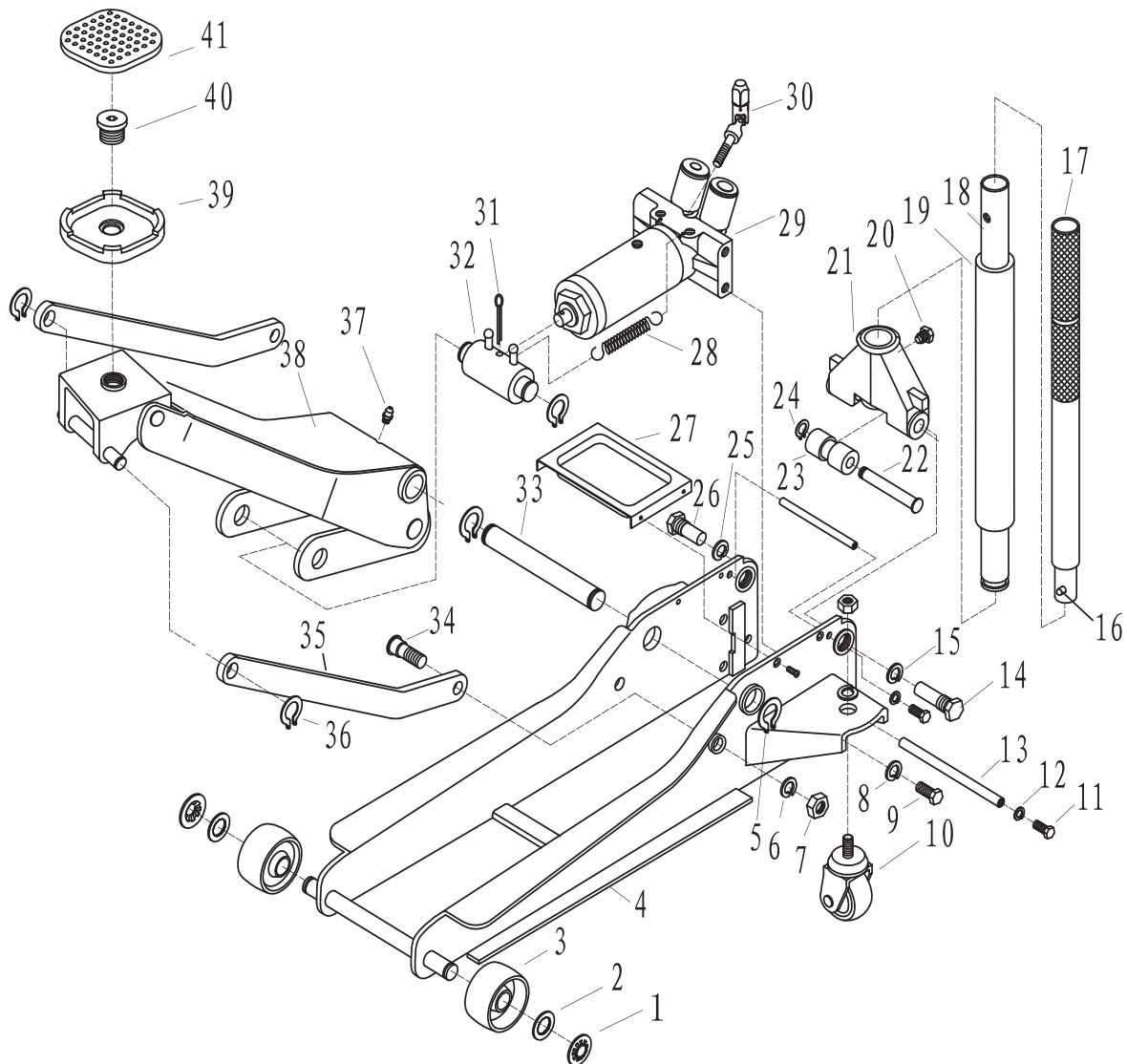
- When the jack is not in use, make sure the lifting arm is fully retracted to avoid corrosion.
- Keep the jack in a clean, dry place and out of children's reach.
- For best performance and longest life. replace the hydraulic fluid in the reservoir at least once a year. To check the hydraulic fluid level, lower the lifting arm completely.
- The hydraulic fluid level should be just below the filler plug. Replenish if necessary, and reinstall the rubber filler plug. Excessive hydraulic oil may render the jack inoperative.
- Inspect the jack before each use. Take corrective action or remove the jack from service if any of the following problems are found:
 - a. Cracked or damaged frame
 - b. Leaking hydraulic fluid
 - c. Scored, damaged piston rod
 - d. Loose hardware
 - e. Modified equipment
- Keep warning labels and instructional decals clean and readable. You may use a mild soap solution to wash external surfaces of the jack.
- Rust Prevention: Clean and wipe with an oily cloth, the piston ram and pump piston every 3 months or when signs of rust or corrosion appear.

Troubleshooting

Caution: To prevent personal injury, all inspection, maintenance, and repair procedures must be performed when the jack is free of load.

Trouble	Solution
Jack will not lift load or leaks down excessively	<ol style="list-style-type: none"> 1. The release valve is not closed. Turn the valve clockwise tightly. If this does not work, remove handle, lubricate handle receptacle and handle end, then retry. 2. Low on hydraulic fluid. Follow Step 5 of the "ASSEMBLY" procedure on page 3. 3. Pump seals or back-up ring may be defective. Clean hydraulic fluid passages, replace seals and refill hydraulic fluid. (Must be serviced by qualified service center)
Jack will not lift to its full height	1. Low on hydraulic fluid. Follow Step 5 of the "ASSEMBLY" procedure on page 3.
	2. The hydraulic system has trapped air. Follow Step 5 of the "ASSEMBLY" procedure on page 3.
Jack will not lower completely	Return spring is broken or linkages are binding. Replace spring if broken. Grease pivot shaft and all lift arm linkages.
Jack will not lift smoothly or jack feels spongy	The hydraulic system has trapped air. Follow Step 5 of the "ASSEMBLY" procedure on page 3.
Jack will not hold load or handle rises	Discharge ball bearing is not sealing hydraulic system and oil may be dirty. Manually flush hydraulic system. Open the release valve, as required, to raise and lower the lift arm. Manually raise and lower lift arm.

Parts List

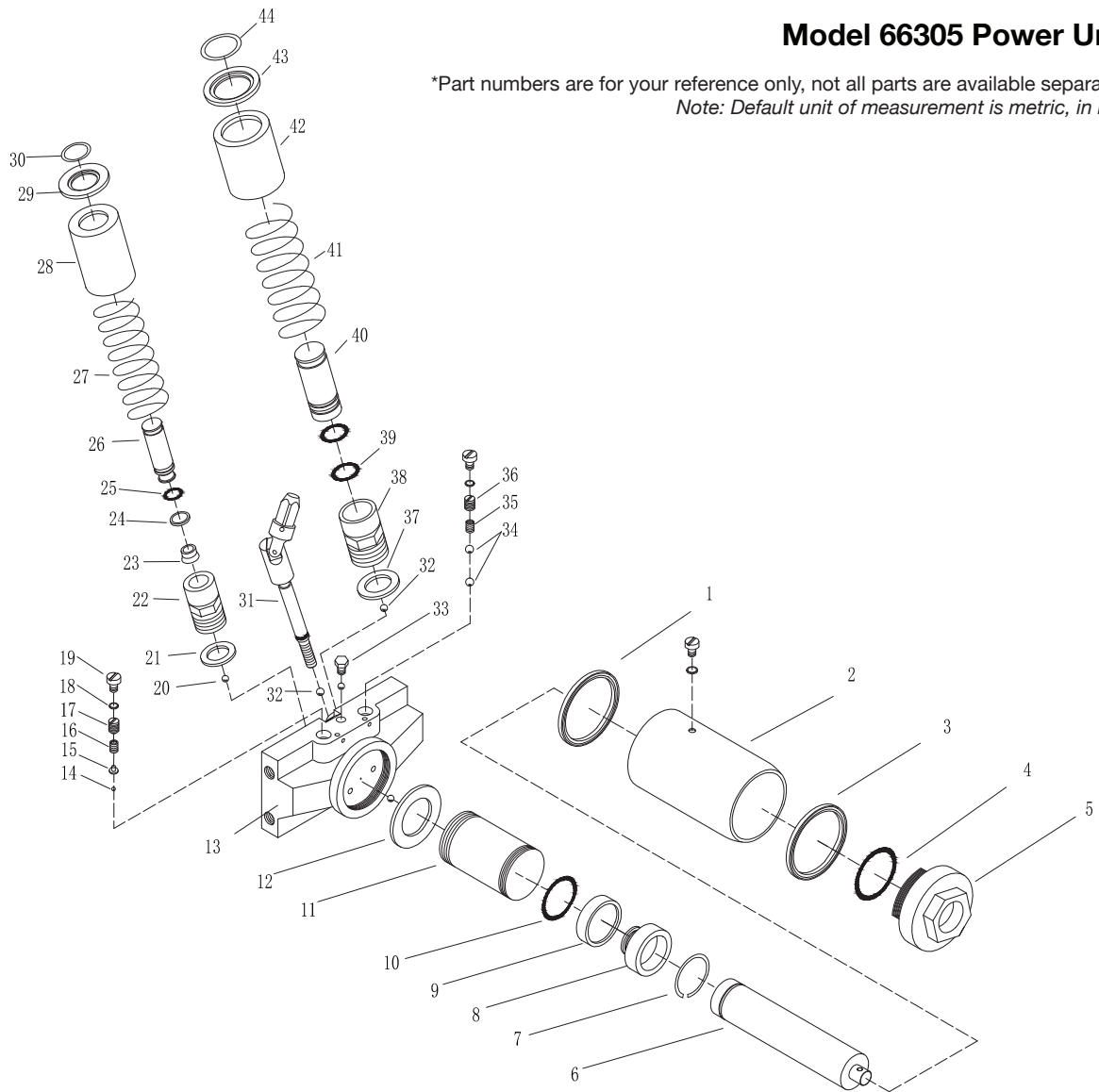


PART NO.	QUANTITY	DESCRIPTION
1	2	RETAINING RING
2	2	WASHER
3	2	FRONT WHEEL
4	1	FRAME
5	4	RETAINING RING M25
6	4	SPRING WASHER M16
7	4	NUT M16
8	4	SPRING WASHER M12
9	4	SCREW M12X25
10	2	REAR CASTER ASSEMBLY
11	4	BOLT M8X20
12	4	SPRING WASHER M8
13	2	TIE ROD
14	1	BOLT-HANDLE YOKE
15	1	SPRING WASHER M18
16	1	UPPER HANDLE DETENT
17	1	UPPER HANDLE
18	1	LOWER HANDLE
19	1	HANDLE BUMPER
20	1	SET SCREW-HANDLE
21	1	HANDLE YOKE

PART NO.	QUANTITY	DESCRIPTION
22	1	CONNECT ROD
23	1	HANDLE YOKE ROLLER
24	1	RETAINING RING M12
25	1	SPRING WASHER M18
26	1	BOLT-HANDLE YOKE
27	1	COVER PLATE
28	1	RETURN SPRING
29	1	POWER UNIT ASSEMBLY
30	1	UNIVERSAL JOINT
31	1	SPLIT PIN
32	1	CONNECTING ROD
33	1	SPINDLE-LIFT ARM
34	2	SCREW-SIDE LINK
35	2	SIDE LINK
36	2	RETAINING RING M16
37	1	GREASE FITTING
38	1	LIFTING ARM ASSEMBLY
39	1	SADDLE
40	1	SADDLE SCREW
41	1	RUBBER PAD

Model 66305 Power Unit

*Part numbers are for your reference only, not all parts are available separately.
 Note: Default unit of measurement is metric, in mm.



PART NO.	QUANTITY	DESCRIPTION
1	1	LOWER GASKET
2	1	RESERVOIR
3	1	UPPER GASKET
4	1	O-RING 29.6MM X 3.5MM
5	1	CYLINDER NUT
6	1	RAM
7	1	RETAINING RING 30MM
8	1	RAM BEARING
9	1	CUP SEAL
10	1	O-RING 31MM X 4.61MM
11	1	CYLINDER
12	1	BRASS CYLINDER SEAL
13	1	HYDRAULIC BLOCK
14	1	BEARING Ø4MM
15	1	VALVE SEAT
16	1	RELIEF VALVE SPRING
17	1	RELIEF VALVE SCREW (SMALL PUMP)
18	2	O-RING 7.1MM X 1.8MM
19	2	RELIEF VALVE BOLT
20	1	BEARING Ø5MM
21	1	BRASS WASHER
22	1	SMALL PUMP CYLINDER

PART NO.	QUANTITY	DESCRIPTION
23	1	CUP SEAL
24	1	BACKUP WASHER
25	1	O-RING 10.2MM X 2.65MM
26	1	SMALL PUMP PISTON
27	1	SMALL SPRING
28	1	SMALL DUST CAP
29	1	SMALL SPRING CAP
30	1	RETAINING RING 15
31	1	U-JOINT RELEASE ASSEMBLY
32	2	BEARING Ø6MM
33	1	HEX BOLT M6
34	2	BEARING Ø7MM
35	1	LOW PRESSURE RELIEF VALVE SPRING
36	1	RELIEF VALVE SCREW (LARGE PUMP)
37	1	LARGE PUMP BRASS WASHER
38	1	LARGE PUMP CYLINDER
39	2	O-RING 20MM X 2.65MM
40	1	LARGE PUMP PISTON
41	1	LARGE PUMP SPRING
42	1	DUST COVER (LARGE)
43	1	LARGE SPRING CAP
44	1	RETAINING RING 25MM

Limited One Year Warranty

Jackco Transnational Inc. (Jackco) warrants all Jackco equipment and tools to the original purchaser against any manufacturing defect in material or workmanship for a period of one (1) year from the original date of purchase. If the defective equipment or tool is determined to be covered under this warranty, it shall be repaired or replaced at manufacturer's discretion without charge, provided that the equipment or tool must be returned with proof of purchase to the dealer and freight prepaid, if returned to the manufacturer. This warranty shall not apply to damage due to accident, negligent use, lack of maintenance, abuse or applications other than the specific function the equipment or tool is designed for.

No other warranties, expressed or implied, including those of merchantability or fitness for particular purpose shall be applicable to Jackco except as specifically stated herein. In no event shall Jackco be liable to any party for any special, direct, indirect, consequential, punitive damage of any nature caused by the sale or use of the equipment or tool.

Note: This warranty gives the original purchaser specific legal rights which may vary from state to state.



Visit our website at: www.jackco.com
Email our technical support at: techsupport@jackco.com