



1000 lb. Capacity Rotating Engine Stand

Model: 71000R



This heavy-duty engine stand from Jackco can support up to 1000 lbs and features a convenient tool tray for easy access to tools while working. The rotating design allows for easy maneuvering and positioning, making engine work a breeze. Designed for durability and functionality, this stand is a must-have for any engine expert.



TOOL TRAY

Keep tools and parts easily accessible while working on an engine.

ADJUSTABLE ARMS

Accommodates most engines.

DURABLE FRAME

Constructed of high grade steel square tube.



SWIVEL CASTERS

Swivel front locking casters allow for easy maneuverability



EASY ROTATION

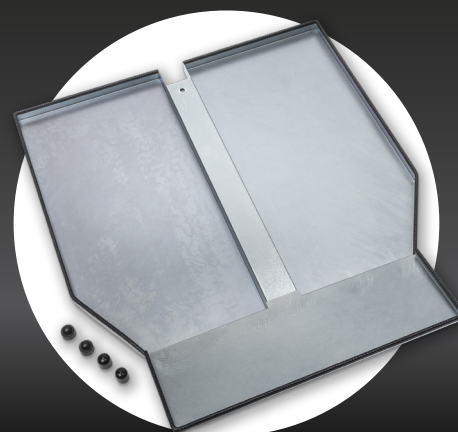
Effortlessly rotate the engine while it self locks in any position.

**NEW
RELEASE**

Engine Stand Drip Pan

Model: 71000R-T

- Fits Jackco 1,000 lb. capacity engine stands. Precise fit that requires no tools or hardware to install.
- Catches any fluids, dirt, grease, debris or parts while working on your engine.
- Three-piece design makes for easy assembly and disassembly. Can be easily stored when not in use. Pre-drilled holes allow it to be hung on wall.
- Rubberized edge guard so no sharp edges are exposed.



www.jackco.com