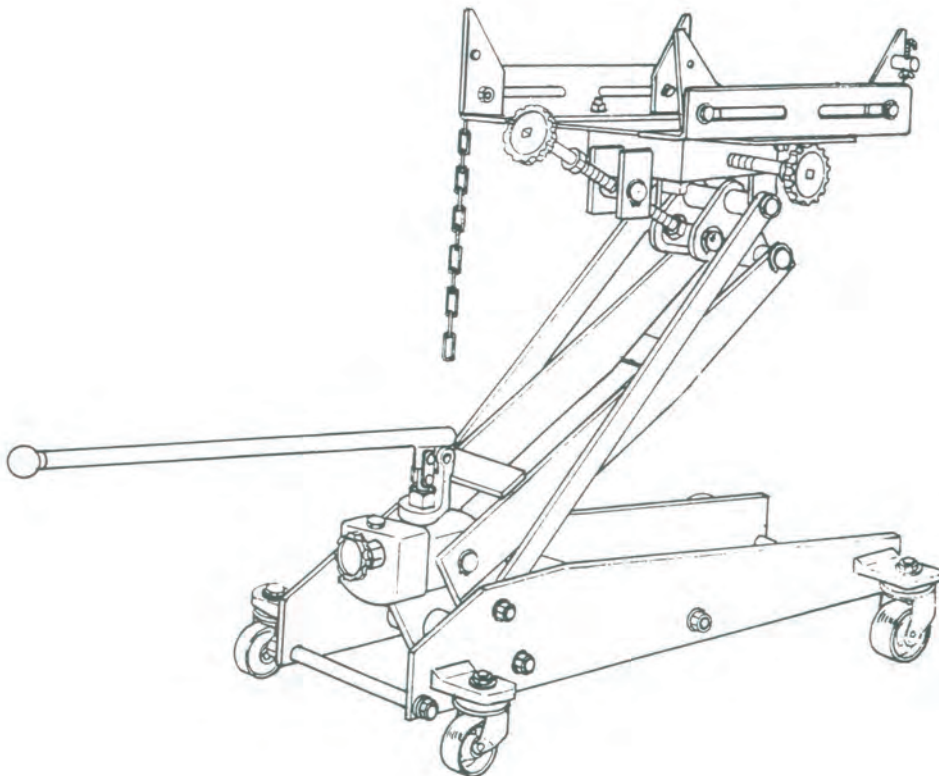




MODEL 60020
TRANSMISSION JACK
1 TON CAPACITY
USER'S MANUAL



Jackco Transnational Inc. © 2009
South El Monte, CA
www.jackco.com

FOR YOUR SAFETY

Read all instructions, warnings and cautions carefully. Follow all safety precautions to avoid personal injury or property damage during system operation. Jackco cannot be responsible for damage or injury resulting from unsafe product use, lack of maintenance or incorrect product and/or system operation. Contact Jackco when in doubt as to the safety precautions and operations.

Failure to comply with the following cautions and warnings could cause equipment damage and personal injury.

WARNING

- Stay clear of loads supported by hydraulics. A cylinder, when used as a load lifting device, should never be used as a load holding device. After the load had been raised or lowered, it must always be blocked mechanically.
- Do not exceed equipment rating never attempt to lift a load weighing more than the capacity of the cylinder. Overloading causes equipment failure and possible personal injury.
- BE SURE SETUP IS STABLE BEFORE LIFTING LOAD.
- Avoid situations where loads are not directly centered. Off-center loads produce considerable strain on cylinders and plungers. In addition, the load may slip or fall, causing potentially dangerous results.
- Immediately replace worn or damaged parts genuine JACKCO parts. Standard grade parts will break causing personal injury and property damage. JACKCO parts are designed to fit properly and withstand high loads.

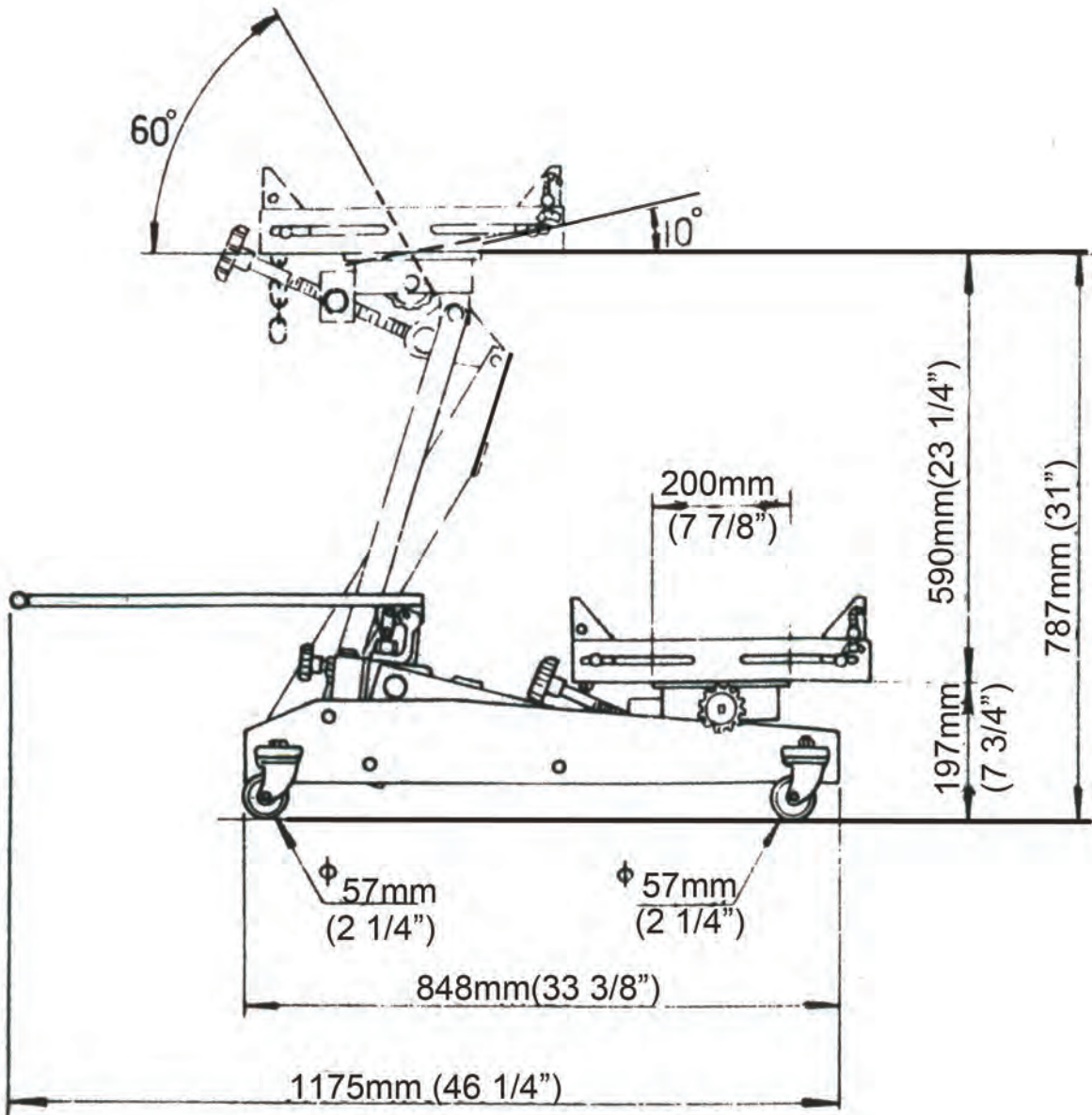
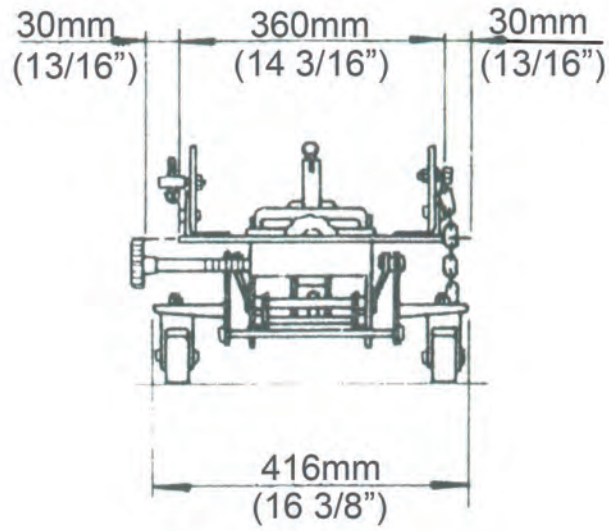
DANGER

- To avoid personal injury keep hands and feet away from work piece during operation.
- NEVER set the relief valve to a higher pressure than the maximum rated pressure of the pump. Higher settings may result in equipment damage and/or personal injury. Do not remove relief valve.

CAUTION

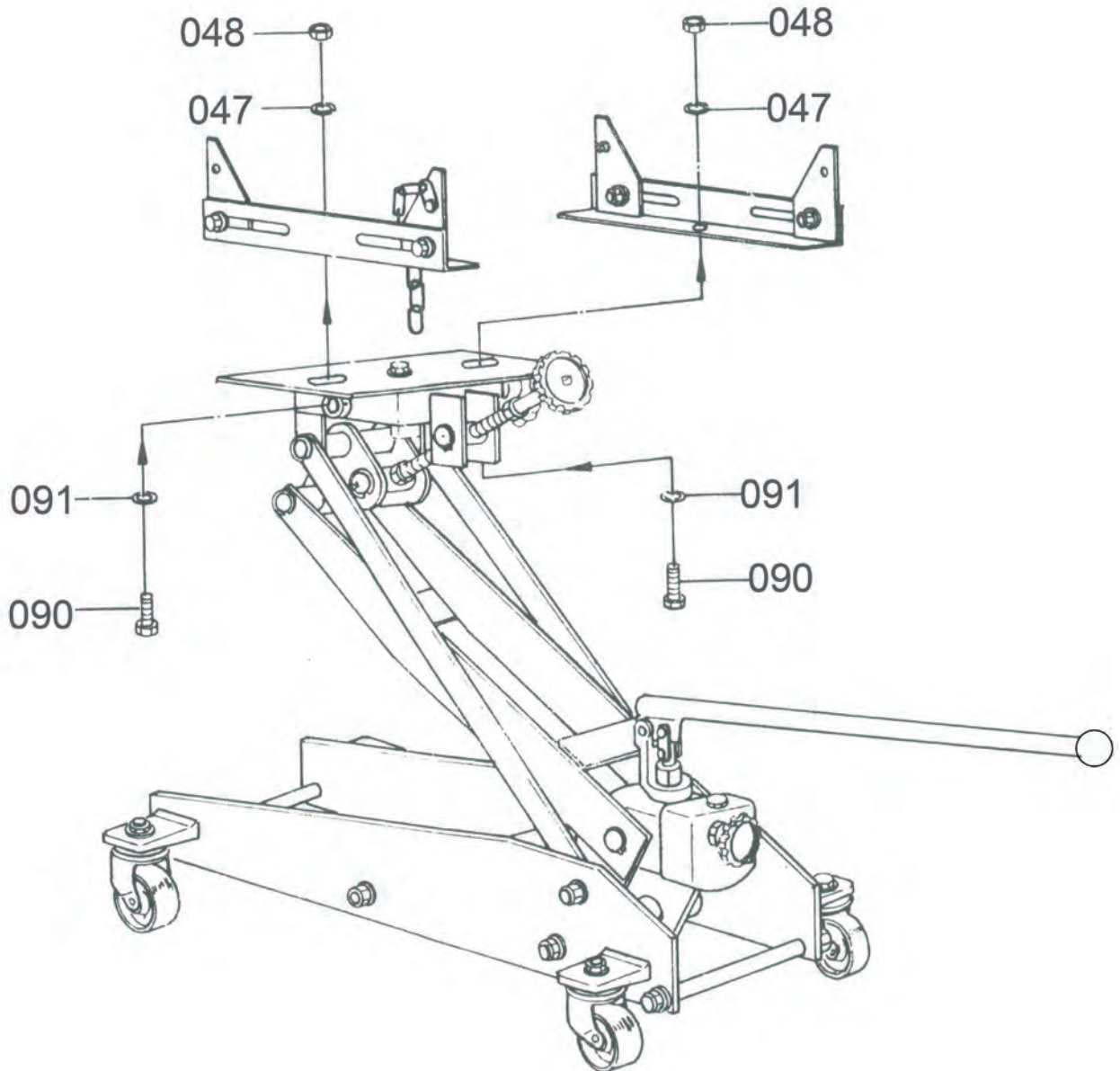
- Keep hydraulic equipment away from flames and heat. Excessive heat will soften packing and seals, resulting in fluid leaks. Heat also weakens hose materials and packings. For optimum performance do not expose equipment to temperatures of 150°F or higher. Protect hoses and cylinders from weld spatter.
- Hydraulic equipment must only be serviced by a qualified hydraulic technician. For repair service, contact JACKCO Inc. To protect your warranty, use only JACKCO hydraulic oil.

SPECIFICATION DRAWING

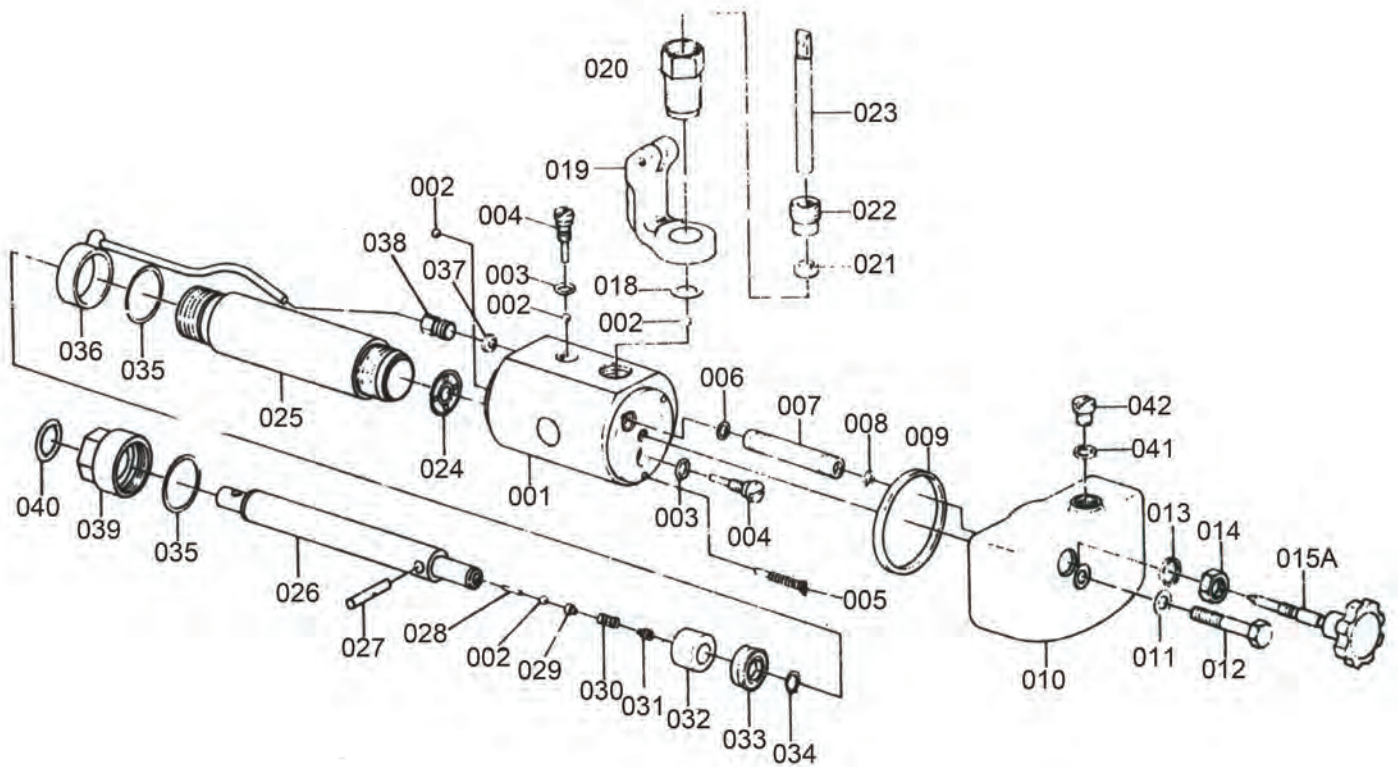


ASSEMBLING INSTRUCTION

Place the angle plate assembly on the saddle kit (#088), then fix them with the spring washer (#047), nut (#048), washer (#091), and bolt (#090).

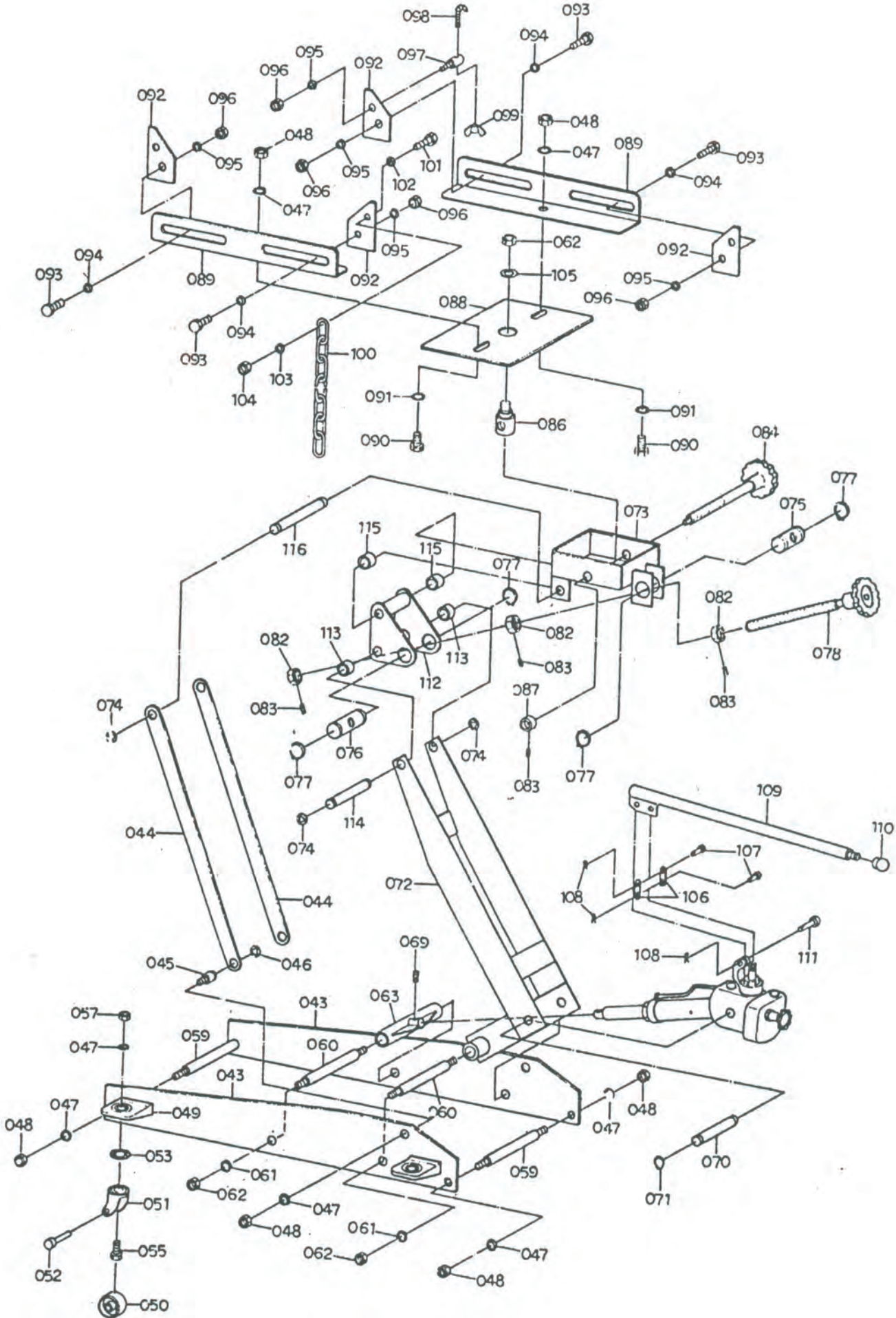


EXPLODED VIEW OF PUMP UNIT



Part No.	Description	Q'ty	Part No.	Description	Q'ty
001	Base	1	023	Pump Piston	1
002	Steel Ball 1/4"	4	024	Washer	1
003	O-ring	2	025	Cylinder	1
004	Bolt, Check Valve	2	026	Ram	1
005	Filter	1	027	Pin	1
006	Washer	1	028	Stem	1
007	Release Valve	1	029	Plunger, Spring	1
008	O-ring	1	030	Spring	1
009	Seal	1	031	Screw	1
010	Reservoir	1	032	Ram Bushing	1
011	Gasket	1	033	Cup Set	1
012	Bolt	1	034	Snap-Ring "C"	1
013	Seal	1	035	Packing	2
014	Nut	1	036	Air Duct	1
015A	Release Assembly	1	037	Seal	1
018	Washer	1	038	Bolt	1
019	Handle Fork	1	039	Top Nut	1
020	Pump Cylinder	1	040	O-ring	1
021	Cup Seal	1	041	Seal	1
022	Screw	1	042	Air Vent Valve	1

PARTS LIST



Part No.	Description	Q'ty	Part No.	Description	Q'ty
043	Frame	2	086	Stationary Screw	1
044	Side Link	2	087	Stationary Ring	1
045	Screw, Side Link	2	088	Saddle Kit	1
046	Snap-Ring "E"	2	089	Angle Plate	2
047	Spring Washer	12	090	Bolt	2
048	Nut	8	091	Washer	2
049	Caster Bracket	4	092	Stationary Plate	4
050	Rear Caster	4	093	Bolt	4
051	Fork Caster	4	094	Washer	4
052	Shaft, Rear Caster	4	095	Spring Washer	5
053	Ball Bearing	4	096	Nut	5
055	Bolt	4	097	Hook Pin	1
057	Nut	4	098	Hook Screw	1
059	Spindle, Frame	2	099	Wing Nut	1
060	Spindle	2	100	Chain	1
061	Spring Washer	4	101	Bolt	1
062	Nut	5	102	Washer	1
063	Spindle Tub Assembly	1	103	Spring Washer	1
069	Screw, Set	1	104	Nut	1
070	Spindle, Base	1	105	Washer	1
071	Snap-Ring "C"	2	106	Link	2
072	Lifting Arm Assembly	1	107	Pin	2
073	Saddle Base Assembly	1	108	Cotter Pin	3
074	Snap-Ring "C"	4	109	Handle	1
075	Stationary Rod	1	110	Gripper	1
076	Stationary Rod	1	111	Pin	1
077	Snap-Ring "C"	4	112	Support, Saddle Base	1
078	Adjustable Screw Assembly	1	113	Bushing	2
082	Nut	3	114	Connecting Rod	1
083	Screw Set	4	115	Bushing	2
084	Adjustable Screw Assembly	1	116	Connecting Rod	1

LIMITED ONE YEAR WARRANTY

Jackco Transnational Inc. warrants all Jackco equipment and tools to the original purchaser against any manufacturing defect in material or workmanship for a period of one (1) year from the original date of purchase. If the defective equipment or tool is determined to be covered under this warranty, it shall be repaired or replaced at manufacturer's discretion without charge, provided that the equipment or tool must be returned with proof of purchase to the dealer and freight prepaid, if returned to the manufacturer. This warranty shall not apply to damage due to accident, negligent use, and lack of maintenance, abuse or applications other than the specific function the equipment or tool is designed for.

No other warranties, expressed or implied, including those of merchantability or fitness for particular purpose shall be applicable to Jackco except as specifically stated herein. In no event shall Jackco be liable to any party for any special, direct, indirect, consequential, punitive damage of any nature caused by the sale or use of the equipment or tool.

Note: This warranty gives the original purchaser specific legal rights which may vary from state to state.

Jackco Transnational Inc. © 2009
South El Monte, CA
www.jackco.com