

Technical Specifications

Power:	20W
CCT:	5500-6000K
Flux:	1800lm
Beam angle:	120 Degrees
Working time:	Approx. 1.5 - 5 hours*
Working temperature:	-4° F ~ 122° F
LED life:	50,000 hours
Certifications:	(CE, RoHs)

Compatible Batteries without Adaptor



Makita Type

Adaptor included for the following batteries:



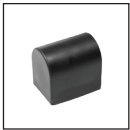
Milwaukee M18 Type



DeWalt Type

*Working time depends on brightness setting and battery condition.
(Tested with a 1.5 AH capacity battery)

Available Accessories



Magnetic Base (4)
ZT50263



Replacement Adaptor
ZT50223ADP

Warranty

Jackco Transnational Inc. warrants this flood light to the original purchaser against any manufacturing defects in material or workmanship for a period of one (1) year from the original date of purchase. If the defective flood light is determined to be covered under this warranty, it shall be repaired or replaced at manufacturer's discretion without charge, provided that the flood light must be returned with proof of purchase to the dealer and freight prepaid, if returned to the manufacturer. This warranty shall not apply to damage due to drops, accidents, negligent use, and lack of maintenance, abuse, or applications other than the specific function the equipment or tool is designed for.

No other warranties, expressed or implied, including those of merchantability or fitness for particular purpose shall be applicable to Jackco except as specifically stated herein. In no event shall Jackco be liable to any party for any special, direct, indirect, consequential, punitive damage of any nature caused by the sale or use of the equipment or tool.

Note: This warranty gives the original purchaser specific legal rights which may vary from state to state

Makita and the Makita logo are trademarks of Makita U.S.A

DeWalt and the DeWalt logo are trademarks of DeWalt

Milwaukee and the Milwaukee logo are trademarks of Milwaukee Electric Tool



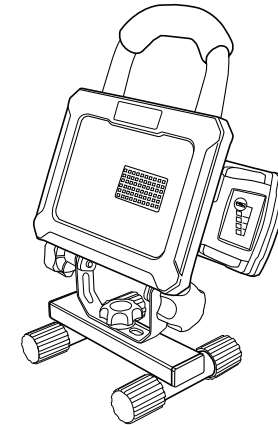
Made in China

ZETA

by JACKCO

Model ZT50223- 20W Cordless LED Worklight

User's Manual



WARNING: Cancer and Reproductive Harm
www.P65Warnings.ca.gov

*Batteries not included

Safety Information

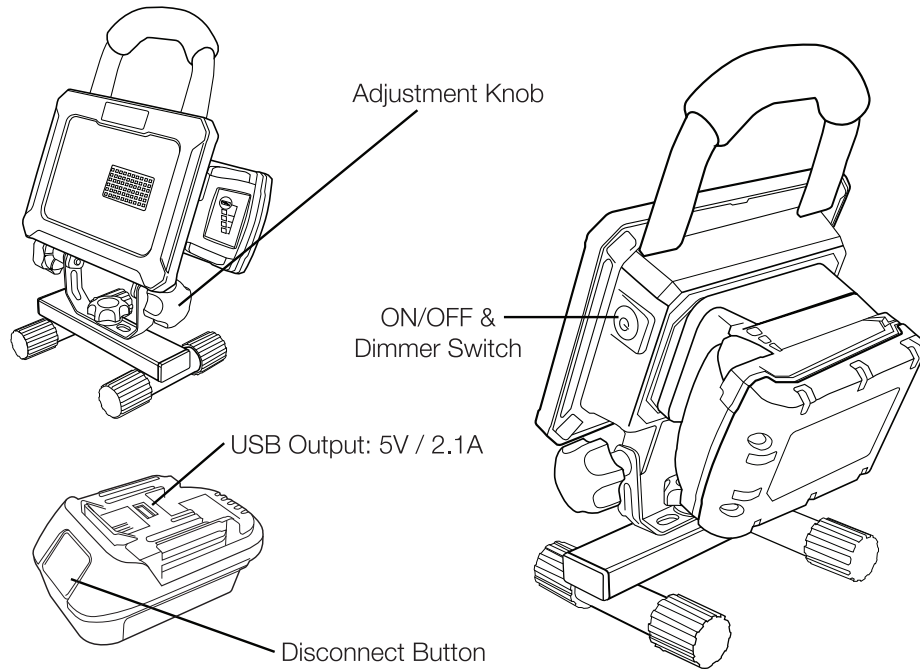
Read all instructions and warnings carefully. Follow all safety precautions to avoid personal injury or property damage during use. Jackco cannot be responsible for damage or injury resulting from unsafe product use, lack of maintenance or incorrect product and/or system operation. Contact Jackco when in doubt as to the safety precautions and operations.

Failure to comply with the following cautions and warnings could cause equipment damage or personal injury and void warranty.

Warning

- Do not use product if switch does not turn it on or off. A product that cannot be controlled with the switch is dangerous and must be repaired.
- Disconnect battery pack from product before making any adjustments, changing accessories, or storing the product. Such preventive safety measures reduce the risk of starting the product accidentally.
- Keep the product and it's handle dry, clean and free from oil and grease. Always use a clean cloth when cleaning. Never use brake fluids, gasoline, petroleum-based products, or any strong solvents to clean your product. Following this rule will reduce the risk of loss of control and deterioration of the enclosure plastic.
- To reduce the risk of electric shock, do not use this light near water.
- Clean only with a dry cloth.
- Do not operate near any heat sources such as radiators, heat registers, stoves, or other apparatus that produce heat.

Product Layout



Operation Guidance

ON / OFF / Light Intensity Switch

The worklight is equipped with a sealed On/Off switch located on the side of the worklight. This switch controls the light intensity. (100%-50%-25%-OFF)

Installing your battery

Simply slide your battery onto the light as if you were installing a cordless drill battery.

Makita type battery: install the battery directly onto the light.

Dewalt type / Milwaukee type battery: install the included adaptor in-between the light and battery.

Adjusting the light direction

The light can tilt vertically. To adjust the light direction, loosen the side locking knobs. Adjust the worklight head to desired position and re-tighten knobs.

FAQ:

How long will my battery last?

Your battery will last approximately 1.5 - 5 hours with a 1.5 AH battery. Working time depends on brightness setting and battery condition.

Is the light waterproof?

No, the light should be kept out of weather.

How many lumens does the light produce?

The light produces approximately 1800lm.

What is the color temperature of the light?

The color temperature is 5500-6000K.

Troubleshooting

Problem	Solution
No response when pressing the Power switch.	<ul style="list-style-type: none">The battery may be drained, recharge your battery using its supplied charger.

For any additional support, please contact us

Email: techsupport@jackco.com

Phone: (626) 582-8055