



MODEL 804

**4 TON BODY AND FRAME
REPAIR KIT**

USER'S MANUAL



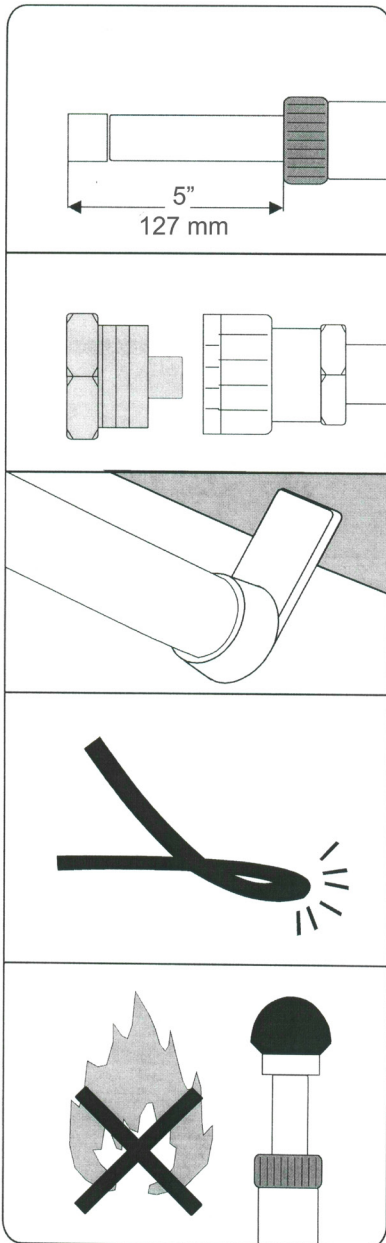
Jackco Transnational Inc.
Azusa, CA
888-452-2526 www.jackco.com

FOR YOUR SAFETY

Read all instructions, warnings and cautions carefully. Follow all safety precautions to avoid personal injury or property damage during system operation. Jackco cannot be responsible for damage or injury resulting from unsafe product use, lack of maintenance or incorrect product and/or system operation. Contact Jackco when in doubt as to the safety precautions and operations.

Failure to comply with the following cautions and warnings could cause equipment damage and personal injury.

WARNING



Ram Load

Never lift a load that exceeds the capacity of the ram. Do not over extend the ram, because it is possible to force the plunger out of the top of the ram.

Dust Caps

When coupler valves are disconnected screw in dust cap to keep the oil line clean.

Off-center loads

Be careful when load is not centered on ram plunger. Pump carefully- IF YOU FEEL THAT YOU HAVE TO PUMP UNUSUALLY HARD-STOP. Adjust set-up to the off center load is reduced.

Protect your hose

Do not drop heavy objects on your hose and avoid sharp kinks. Provide proper clearance to avoid damage to the hose and couplers.

Heat and fire

Always keep your equipment away from excessive heat or fire.

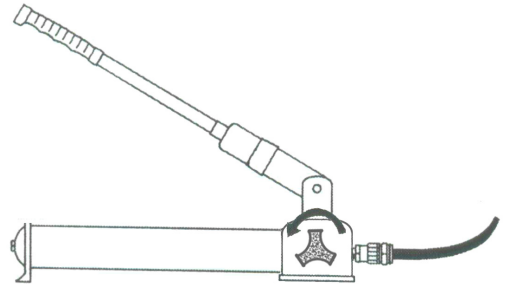
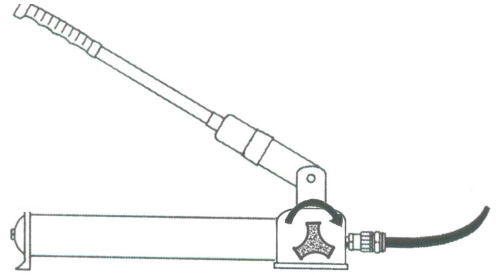
INSTRUCTION

How to operate

Release Valve

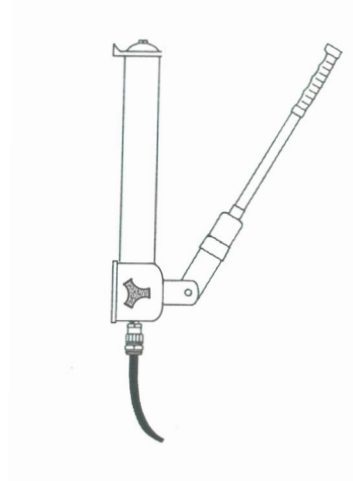
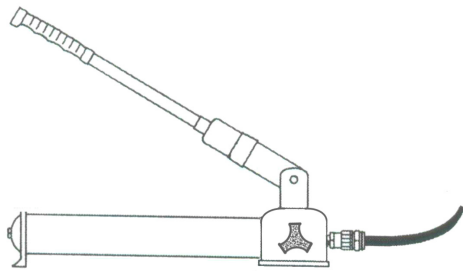
Turn knob **CLOCKWISE** and pump handle for applying pressure.

Turn knob counterclockwise to release pressure.



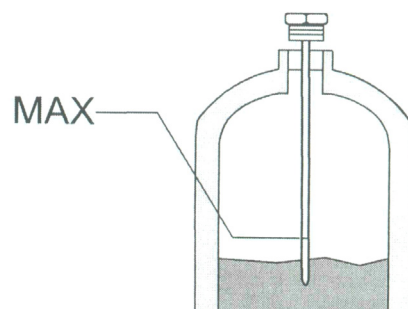
Pump Position

It is possible to hold pump in any possible from horizontal to vertical but always keep the hose end of the pump down when above the horizontal position



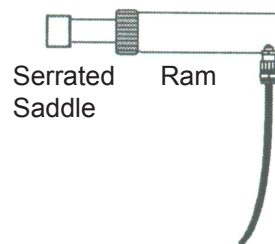
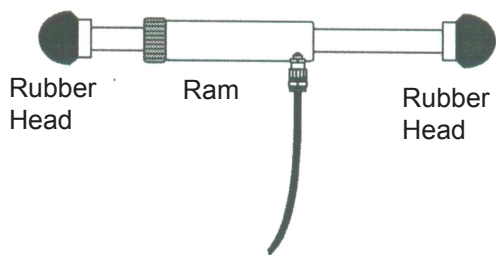
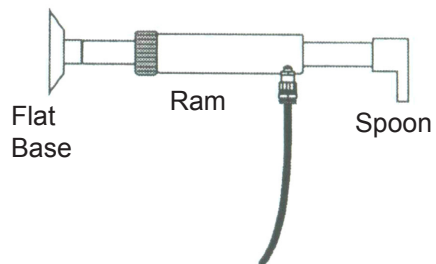
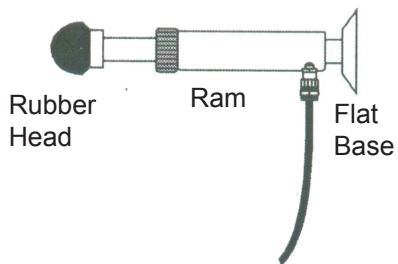
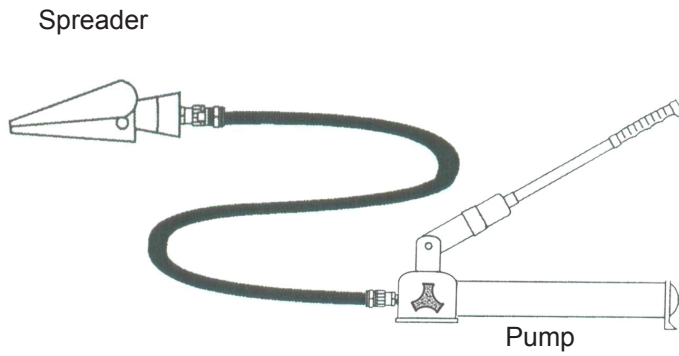
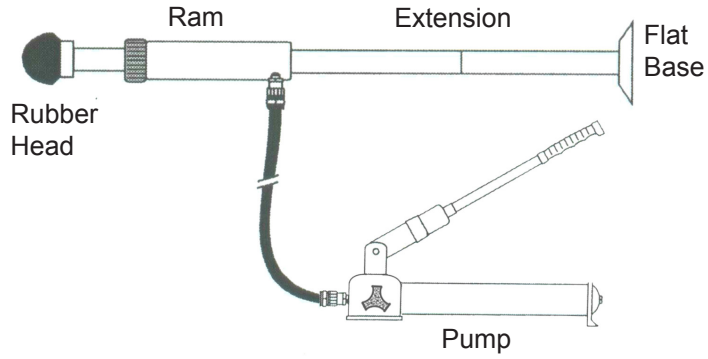
Oil Level

Retract the ram that is connected to the pump. Place pump in an upright position as shown. Remove filler plug and add hydraulic oil until it is level with the full mark on the dip stick.



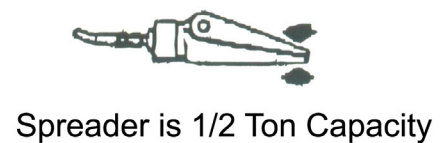
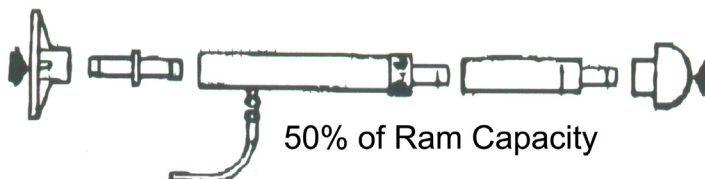
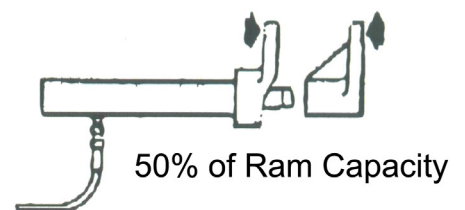
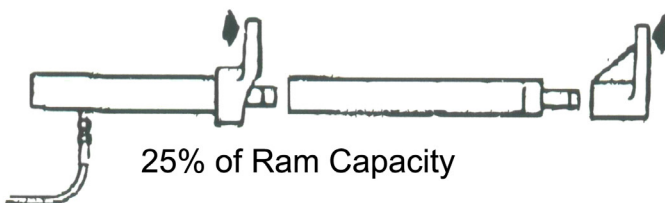
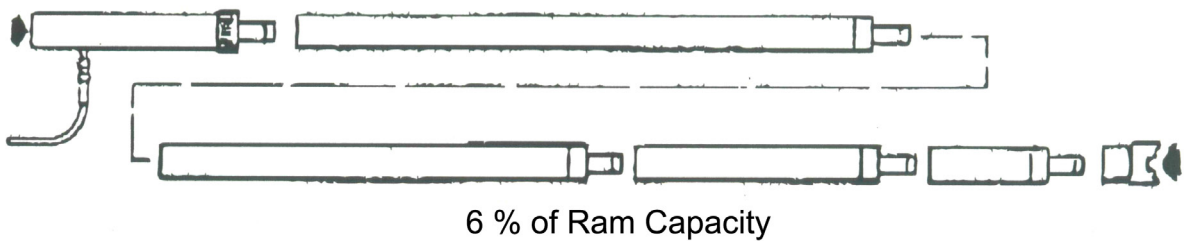
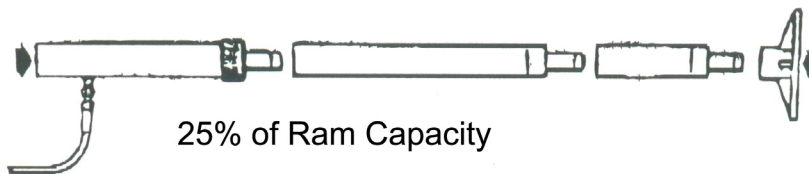
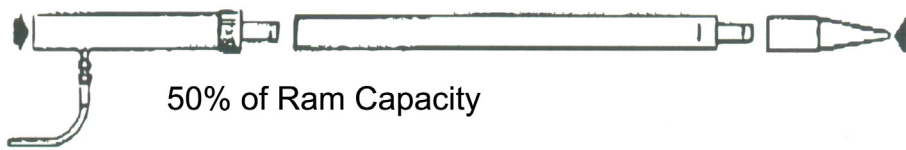
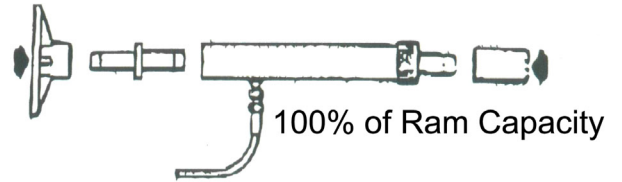
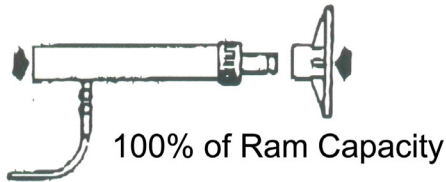
Set Up

Possible configurations for the 4 ton ram and attachments.

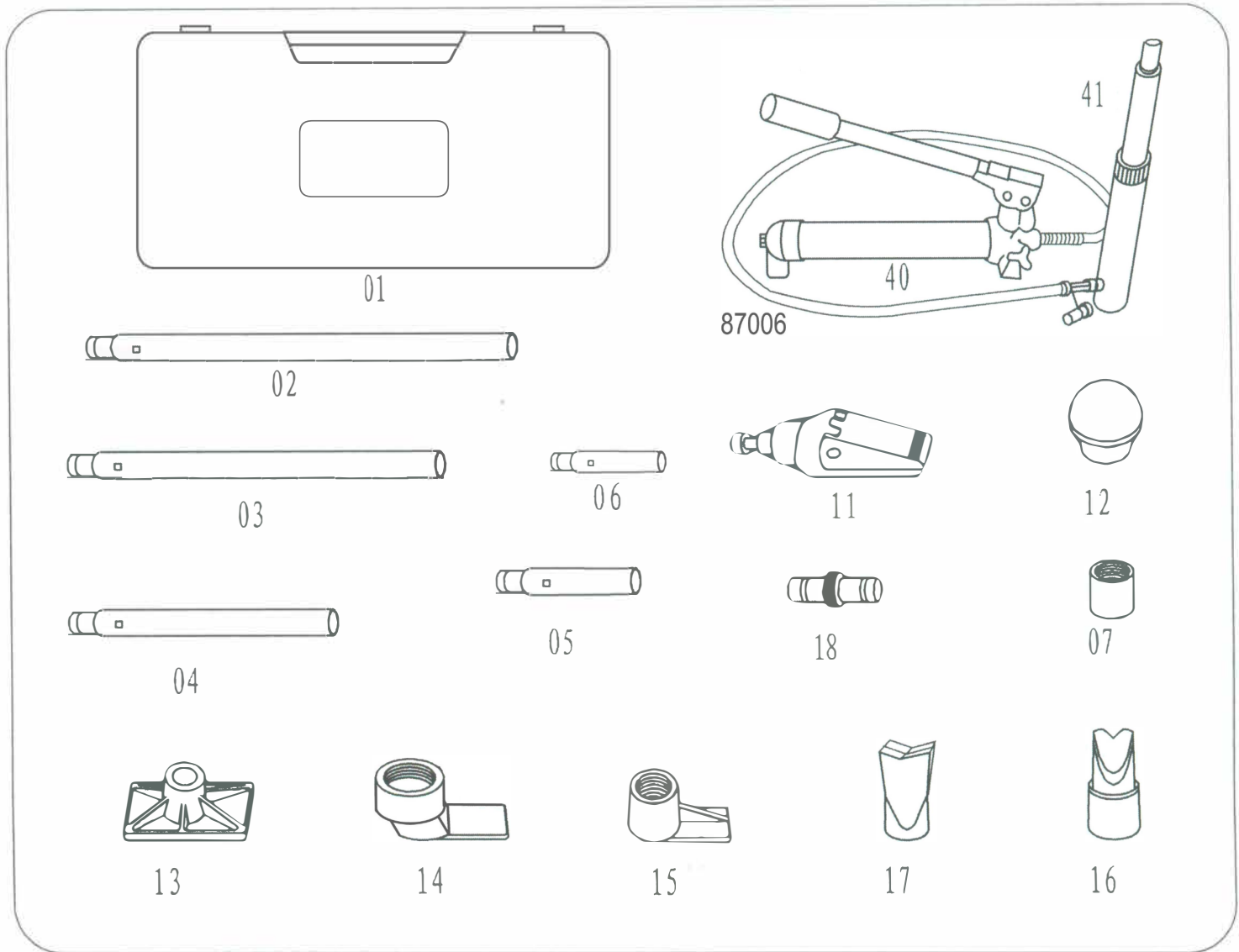


Load Capacities

The capacity of this equipment is significantly affected by the number of attachments used and the type of load supplied. Several typical hook-ups are illustrated below. The approximate load capacity for each set-up is noted with illustration. When using two or more extension tubes together, always position the shortest tube farthest away from the ram.

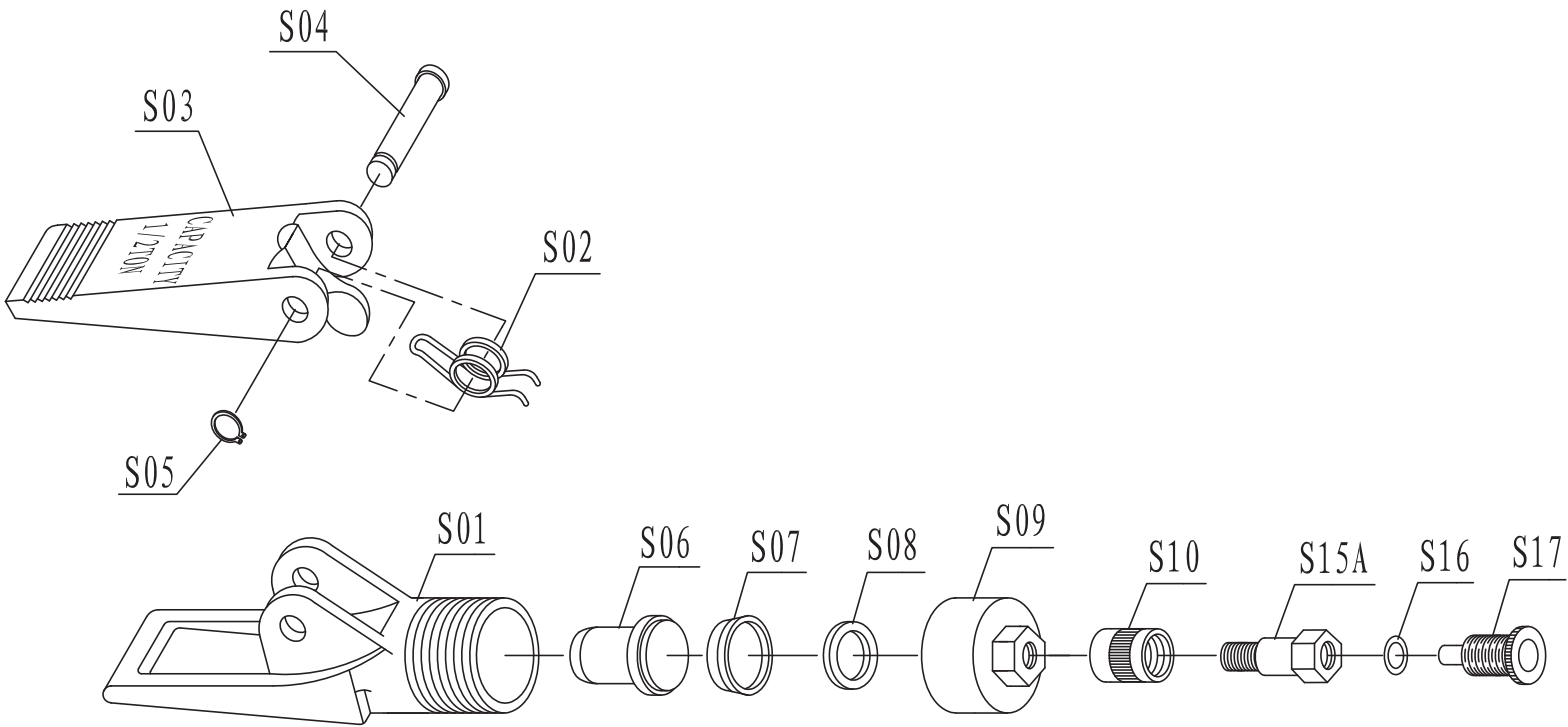


Parts List



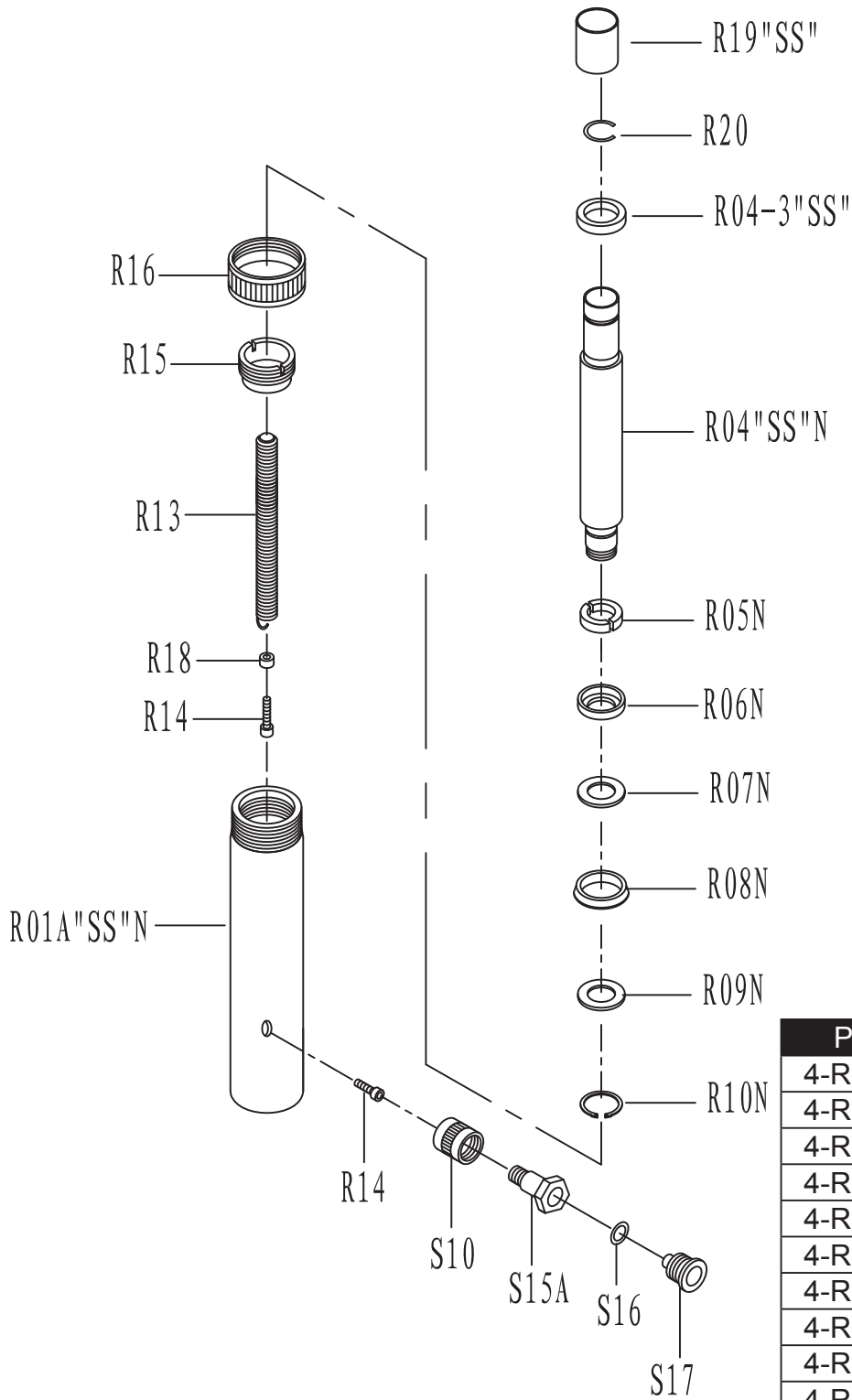
Part No.	Description	Q'ty
804-01	Blow Mold Case	1
804-A02	19 1/2" Extension Tube	1
804-A03	16 1/2" Extension Tube	1
804-A04	8 1/2" Extension Tube	1
804-A05	5 " Extension Tube	1
804-A06	3 1/4" Extension Tube	1
804-07	Serrated Saddle	1
804-11	Spreader Ram	1
804-12	2 3/4" Rubber Head	1
804-13	Flat Base	1
804-14	Spreader Ram Toe	1
804-15	Spreader Plunger Toe	1
804-16	Wedge Head	1
804-17	90° V-Base	1
804-18	Connector	1
804-40	4Ton Hydraulic Unit	1
804-41	4 Ton, 5" Stroke Ram	1
87006	6 ft. Hose With Half Coupling	1

Hydraulic Spreader Assembly 1/2 Ton Capacity



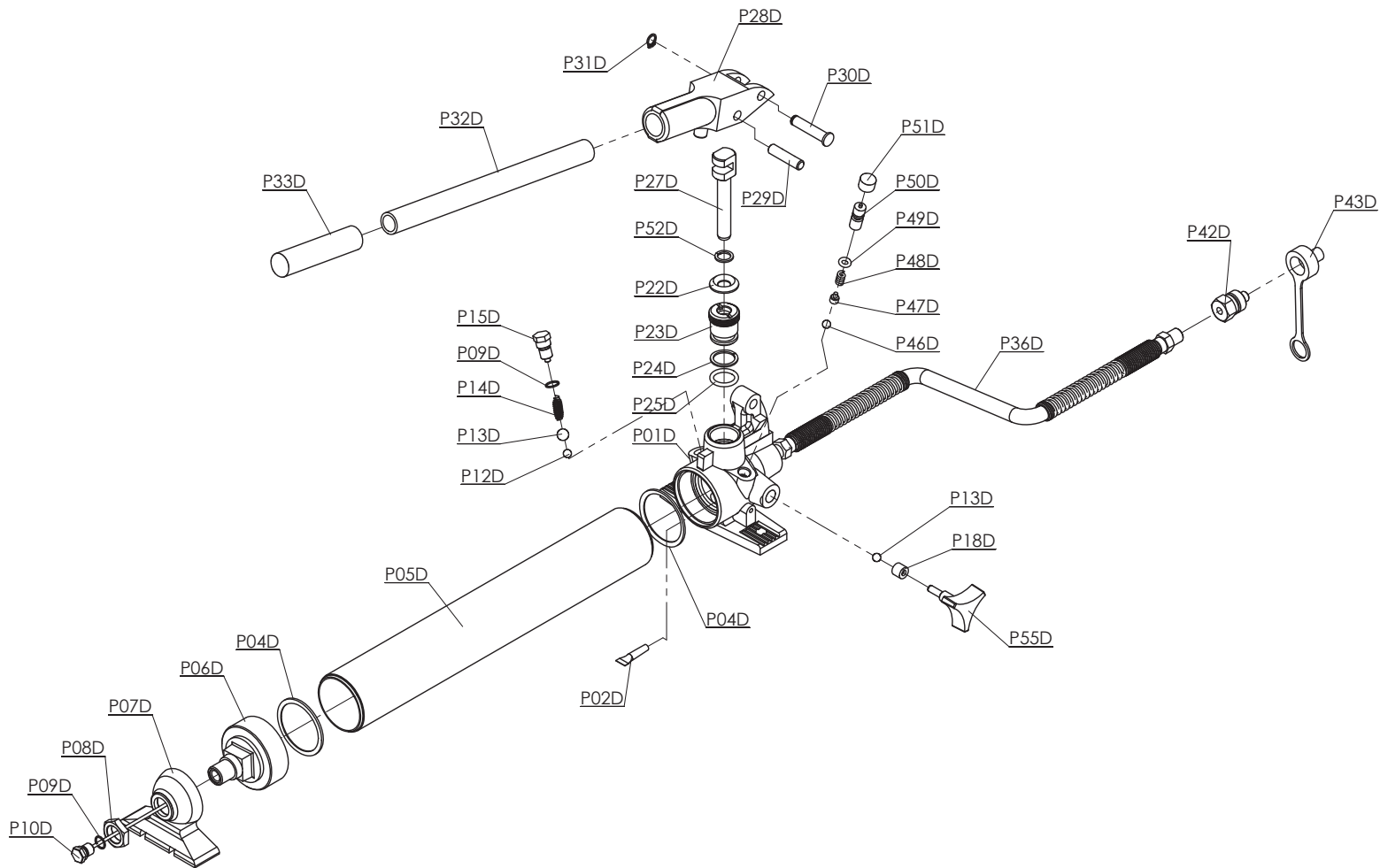
Part No.	Description
04-S01	Lower Duck Bill
04-S02	Spring
04-S03	Upper Duck Bill
04-S04	Pivoting Pin
04-S05	Cir Clips
04-S06	Piston
04-S07	Cup Seal
04-S08	Washer
04-S09	End Cap
04-S10	Coupling Ring
04-S15	Couping Bolt
04-S16	Bolt O-Ring
04-S17	Dust Cap

Hydraulic Ram Assembly 4 Ton Capacity



Part No.	Description
4-R01ASSN	Cylinder
4-R04SSN	Ram
4-R05N	Bearing
4-R06N	Bushing
4-R07N	Back-up Ring
4-R08N	"U" Seal
4-R09N	Washer
4-R10N	Cir Clip
4-R13	Spring
4-R14	Scerw
4-R15	Ring
4-R16	Protector
86140	1 1/4" hydraulic coupler

Hydraulic Body&Frame Pump 10 Ton Capacity



Part No.	Description	Part No.	Description
P01D	Pump Housing	P28D	Pump Pivot Brm Arm
P02D	Filter	P29D	Pivot Arm Pin
P04D	Seal	P30D	Pivot Arm Pin
P05D	Pump Reservoir	P31D	Cir Clip
P06D	Reservoir End Cap	P32D	Handle
P07D	Pump Foot	P33D	Grip
P08D	Nut-Housing	P36D	Hose
P09D	O-Ring	P42D	Coupling
P10D	Bolt	P43D	Dust Cap
P12D	Ball Valve	P46D	Ball Valve
P13D	Ball Valve	P47D	Stem
P14D	Spring	P48D	Spring
P15D	Screw	P49D	O Ring
P18D	Spacer	P50D	Screw
P22D	Y Ring	P51D	Plastic Cap
P23D	Cylinder	P52D	Seal
P24D	Seal	P55D	Release Valve
P25D	O Ring		
P27D	Plunger		

LIMITED ONE YEAR WARRANTY

Jackco Transnational Inc. warrants all Jackco equipment and tools to the original purchaser against any manufacturing defect in material or workmanship for a period of one (1) year from the original date of purchase. If the defective equipment or tool is determined to be covered under this warranty, it shall be repaired or replaced at manufacturer's discretion without charge, provided that the equipment or tool must be returned with proof of purchase to the dealer and freight prepaid, if returned to the manufacturer. This warranty shall not apply to damage due to accident, negligent use, and lack of maintenance, abuse or applications other than the specific function the equipment or tool is designed for.

No other warranties, expressed or implied, including those of merchantability or fitness for particular purpose shall be applicable to Jackco except as specifically stated herein. In no event shall Jackco be liable to any party for any special, direct, indirect, consequential, punitive damage of any nature caused by the sale or use of the equipment or tool.

Note: This warranty gives the original purchaser specific legal rights which may vary from state to state.

Jackco Transnational Inc. © 2009
South El Monte, CA
888-452-2526 www.jackco.com