



Model 71250 Engine Stand

WARNING

FOR YOUR SAFETY AND TO PREVENT INJURY:

- Do not exceed its rated load capacity. Overloading can cause damage to or failure of the stand.
- Always use stand on hard, level surface capable of sustaining the load.
- Never attempt to move loaded stand across floor with cracks or other obstacles that might impede movement of wheels.
- Visual inspection should be made before each use of the stand, checking for cracked welds, damaged, loose or missing parts.
- Be sure that the load is centered and secured to the mounting plate.
- Never work directly under a supported engine.
- Do not drop load suddenly as resulting shock to unit may cause damage.
- All mounting hardware must be tight before using. Do not substitute hardware provided.

Inspection:

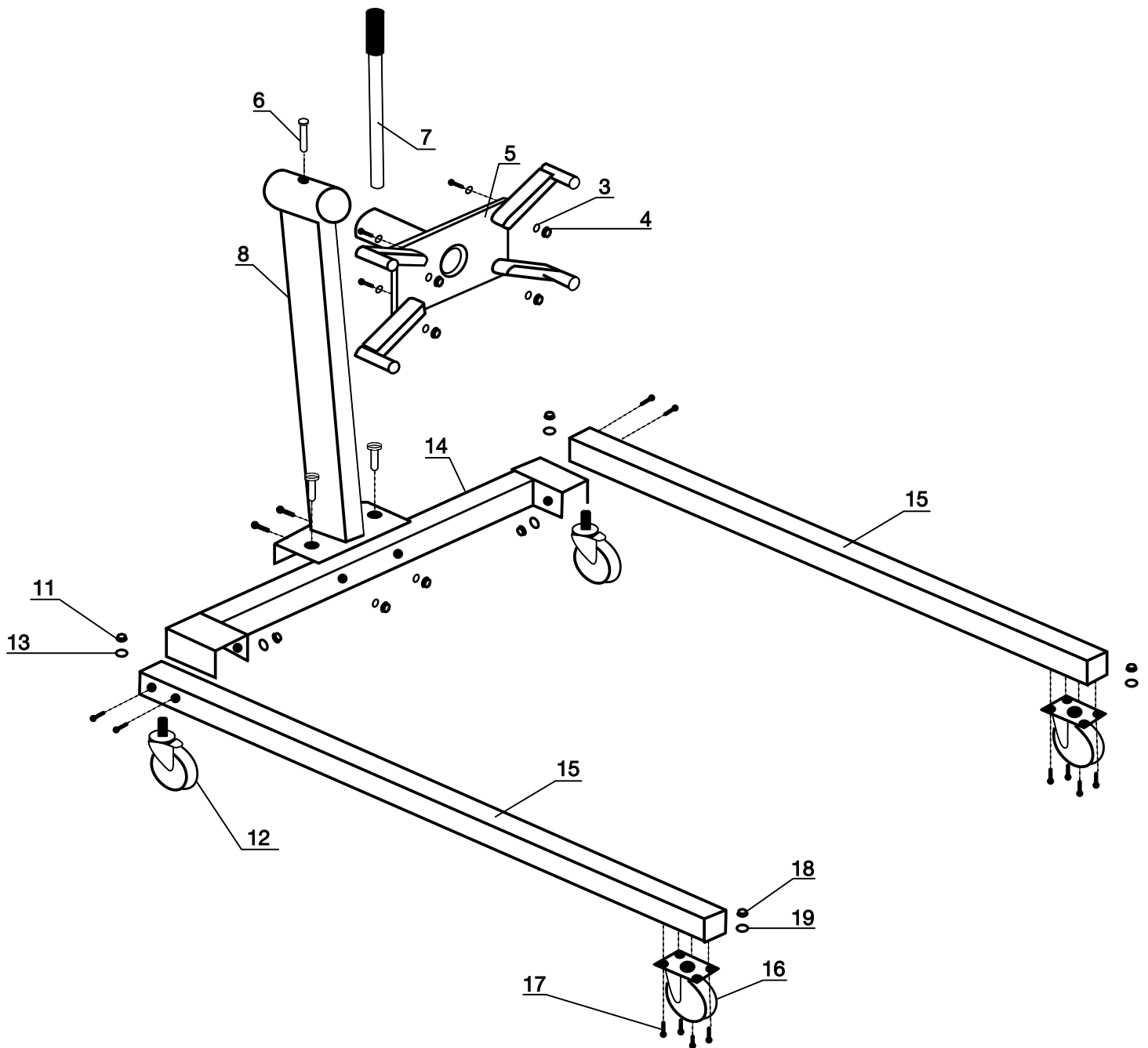
- Visual inspection should be made before each use of the engine stand.
- Any engine stand which appears to be damaged in any way is found to be badly worn, or operated abnormally must be removed from service.
- If the engine stand is accidentally subjected to an abnormal load or shock it must be inspected by the manufacturer immediately.
- It is recommended that an annual inspection of the engine stand be made and that any defective parts, decals, or warning labels be replaced with manufacturer's specified parts.

Assembly Instructions:

- 1.) Attach two 3.5" casters (#16) to the front of legs (#15) using bolts (#17), nuts (#19) and lock washers (#18)
- 2.) Attach two 3" casters (#12) to the rear of legs (#15) using nuts (#11) and lock washers (#13)
- 3.) Assemble two legs (#15) to the rear beam (#14), using bolt (#9), nuts (#11) and flat washers (#10)
- 4.) Attach the main post (#8) to the rear beam (#14), using bolts (#9), nut (#11) and flat washer (#10)
- 5.) Insert the engine mounting plate (#5) through the tube at the top of the main post. Rotate the plate until one of the holes in the inner tube is aligned with a hole in the outer tube and insert the engine pin (#6)
- 6.) Insert the handle (#7) through the hole in the turning plate tube which protrudes from the top of the main post.
- 7.) Attach the shifting stands (#1) to the rotating head (#5) using bolts (#2), flat washers (#3) and nuts (#4)

Check all bolts for tightness before operating.

China



Model 71250 Engine Stand

Ref No.	Description	Qty.	Ref No.	Description	Qty.	Ref No.	Description	Qty.
1	Shifting Stand	4	8	Main Post	1	15	Leg	2
2	Bolt M14x65	4	9	Bolt M12x80	8	16	3.5" Caster	2
3	Flat Washer 14	8	10	Flat Washer 12	8	17	Bolt M8x20	4
4	Nut M14	4	11	Nut M12	8	18	Lock Washer 8	8
5	Turning Plate	1	12	3" Caster	2	19	Nut M8	8
6	Pin	1	13	Lock Washer	2			
7	Handle	1	14	Rear Beam	1			