



**MODEL 65300**  
**3 TON LOW PROFILE**  
**ALUMINUM FLOOR JACK**  
**USER'S MANUAL**



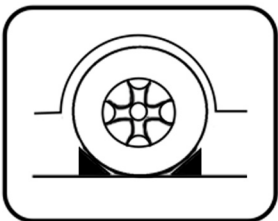
\*This hydraulic jack conforms to all "ANSI / ASME" safety standards.

Jackco Transnational Inc. © 2019

To see more jackco products please visit our website at [www.jackco.com](http://www.jackco.com)

## **FOR YOUR SAFETY**

- Read these safety instructions carefully and keep this manual in an easy to find place as you may need to use it again.
- Non-compliance with these rules may result in injury or damage to the jack or the vehicle.
- Do not modify the jack in any way.
- Never exceed the rated capacity of the jack.
- This jack is a lifting device only and should never be used to move the vehicle.
- The jack should be supported on a solid and level ground. Never use the jack in a surface where it may sink into the ground.
- Ensure that there are no persons inside the vehicle to be lifted. Switch off the engine and apply the brake.
- Position the jack under the manufacturer's recommended lifting point for the vehicle. Off-centered loads can slip and accidents may result.
- During raising and lowering of the load, precautions should be taken to avoid movement of the vehicle. Traffic may cause the raised vehicle to rock during roadside use of the jack.
- Never work under a raised vehicle without supporting it with mechanical/jack stands.
- Never position any part of your body near the movable parts of the jack.
- Ensure that there are no persons or obstructions underneath the vehicle prior to lowering.
- Do not adjust the overload bypass valve under any circumstance.



Use wheel chocks appropriately.

## **SPECIFICATION**

Capacity:	3 tons	Chassis Width:	13 in
Min Height :	3.75 in	Saddle Diameter :	4.52 in
Max Height :	18.1 in	Net Weight :	58 lbs
Length:	26.4 in		

## **PRIOR TO OPERATION**

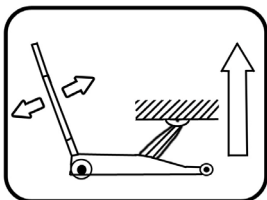
Air may become trapped in the hydraulic system during transit.

### **To Purge Air**

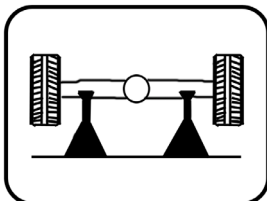
1. Insert the handle into the socket and secure it with the set screw provided.
2. Turn the handle counterclockwise until release valve is open, pump the jack several times to purge the accumulated air in the system.
3. Turn the handle clockwise to close the release valve. The jack is now ready to use.

## **OPERATING INSTRUCTION**

### **To Lift a Vehicle:**

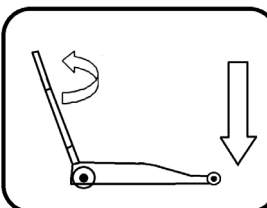


Turn the handle clockwise.  
Move the handle up and down. Use the full stroke of the piston for greater speed.



Support the vehicle with appropriate jack stands.

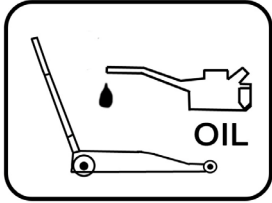
### **To Lower a vehicle:**



Lift the vehicle to remove the jack stands, ensuring that there are no persons or obstructions under the vehicle. Turn the handle counter-clockwise.

## MAINTENANCE

**Important:** Both the maintenance and repair of the jack may only be performed by qualified persons, who have sufficient knowledge of the hydraulic system used in these jacks



Regularly lubricate the moving parts in the wheels, arms, handle and pump roller pin.

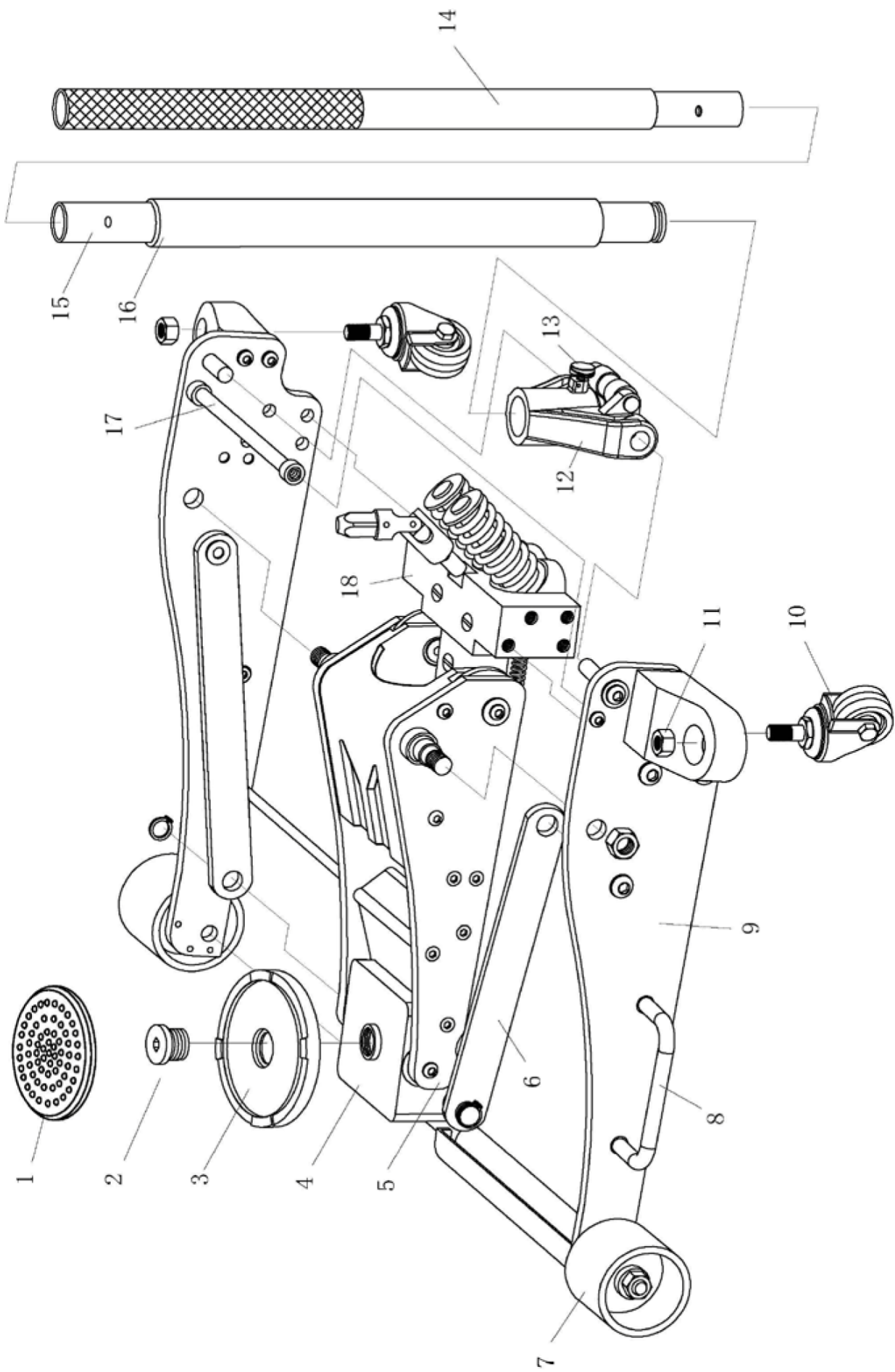
- Only original replacement parts should be used.  
**Extremely Important:** never use brake fluid.
- When the jack is not in use, make sure the lifting arm is fully retracted to avoid corrosion.
- Keep the jack in a clean, dry place and out of children's reach.
- Replace the hydraulic fluid in the reservoir at least once a year. To check the hydraulic fluid level, lower the lifting arm completely.
- The hydraulic fluid level should be just below the filler plug. Replenish if necessary, and reinstall the rubber filler plug. Excessive hydraulic oil may render the jack inoperative.
- Inspect the jack before each use. Take corrective action or remove the jack from service if any of the following problems are found:
  - a. Cracked or damaged frame
  - b. Leaking hydraulic fluid
  - c. Scored, damaged piston rod
  - d. Loose hardware
  - e. Modified equipment
- Keep warning labels and instructional decals clean and readable. You may use a mild soap solution to wash external surfaces of the jack.

## TROUBLESHOOTING

**Caution: To prevent personal injury, all inspection, maintenance, and repair procedures must be performed when the jack is free of load.**

Trouble	Cause	Solution
Jack does not lift	<ol style="list-style-type: none"> <li>1. Release valve is open</li> <li>2. Low/no hydraulic fluid in reservoir</li> <li>3. Air trapped in hydraulic system</li> <li>4. Load is above capacity of jack</li> <li>5. Delivery valve and/or bypass valve not working correctly</li> <li>6. Seals worn or defective</li> </ol>	<ol style="list-style-type: none"> <li>1. Verify the release valve is closed. Release valve may need cleaning.</li> <li>2. Fill with approved hydraulic fluid and bleed system</li> <li>3. Follow the purge air procedure</li> <li>4. Use correct equipment</li> <li>5. Clean to remove dirt or foreign objects from the system. Replace hydraulic fluid</li> <li>6. Replace seals</li> </ol>
Jack lifts only partially	<ol style="list-style-type: none"> <li>1. Too much or not enough hydraulic fluid</li> </ol>	<ol style="list-style-type: none"> <li>1. Check hydraulic fluid level</li> </ol>
Jack advance slowly	<ol style="list-style-type: none"> <li>1. Pump not working correctly</li> <li>2. Seals leaking</li> </ol>	<ol style="list-style-type: none"> <li>1. Rework pump</li> <li>2. Replace seals/O-rings</li> </ol>
Jack lifts load, but doesn't hold	<ol style="list-style-type: none"> <li>1. Cylinder packing is leaking</li> <li>2. Valve not working correctly (suction, delivery, release, or bypass)</li> <li>3. Air trapped in hydraulic system</li> </ol>	<ol style="list-style-type: none"> <li>1. Replace packing</li> <li>2. Inspect valves. Replace if necessary</li> <li>3. follow the purge air procedure</li> </ol>
Jack leaks hydraulic fluid	<ol style="list-style-type: none"> <li>1. Worn or damaged seals</li> </ol>	<ol style="list-style-type: none"> <li>1. Replace seals</li> </ol>
Jack will not retract	<ol style="list-style-type: none"> <li>1. Release valve is closed</li> </ol>	<ol style="list-style-type: none"> <li>1. Open the release valve by turning the handle counter-clockwise (CCW). Maybe necessary to clean release valve.</li> </ol>

# PARTS LIST



Part No.	Description	Q'ty	Part No.	Description	Q'ty
1	Saddle Pad	1	10	Rear Caster Assembly	2
2	Saddle Screw	1	11	Nut M12	4
3	Saddle	1	12	Handle Yoke	1
4	Saddle Base	1	13	Handle Set Screw	1
5	Lift Arm Assembly	1	14	Handle, Upper Section	1
6	Radius Rod	2	15	Handle, Lower Section	1
7	Front Wheel	2	16	Handle Bumper	1
8	Carrying Handle	2	17	Tie Rod	1
9	Side Plate	2	18	Power Unit Assembly	1

#### **LIMITED ONE YEAR WARRANTY**

Jackco Transnational Inc. warrants all Jackco equipment and tools to the original purchaser against any manufacturing defect in material or workmanship for a period of one (1) year from the original date of purchase. If the defective equipment or tool is determined to be covered under this warranty, it shall be repaired or replaced at manufacturer's discretion without charge, provided that the equipment or tool must be returned with proof of purchase to the dealer and freight prepaid, if returned to the manufacturer. This warranty shall not apply to damage due to accident, negligent use, and lack of maintenance, abuse or applications other than the specific function the equipment or tool is designed for.

No other warranties, expressed or implied, including those of merchantability or fitness for particular purpose shall be applicable to Jackco except as specifically stated herein. In no event shall Jackco be liable to any party for any special, direct, indirect, consequential, punitive damage of any nature caused by the sale or use of the equipment or tool.

Note: This warranty gives the original purchaser specific legal rights which may vary from state to state.

Jackco Transnational Inc. © 2009  
South El Monte, CA  
888-452-2526 [www.jackco.com](http://www.jackco.com)