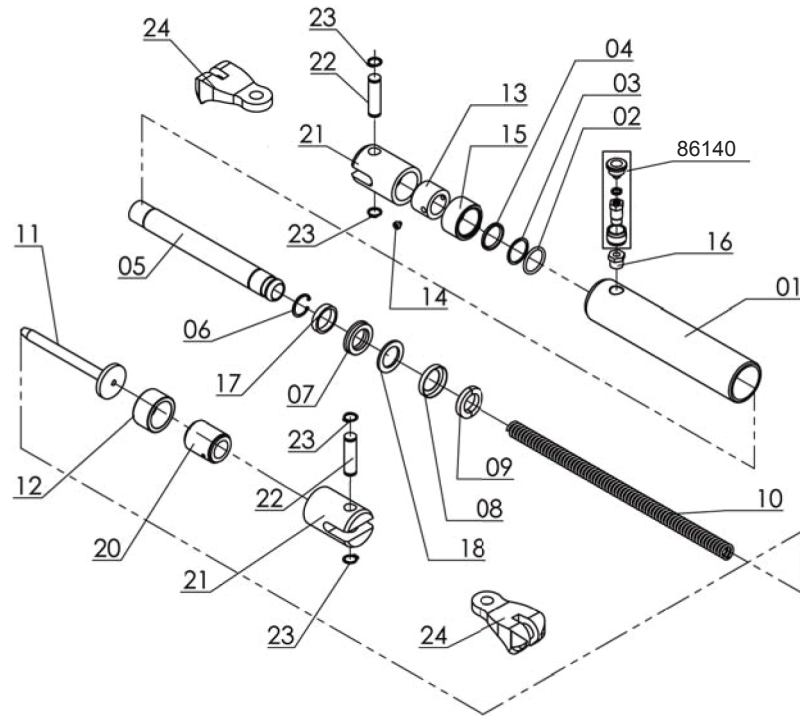


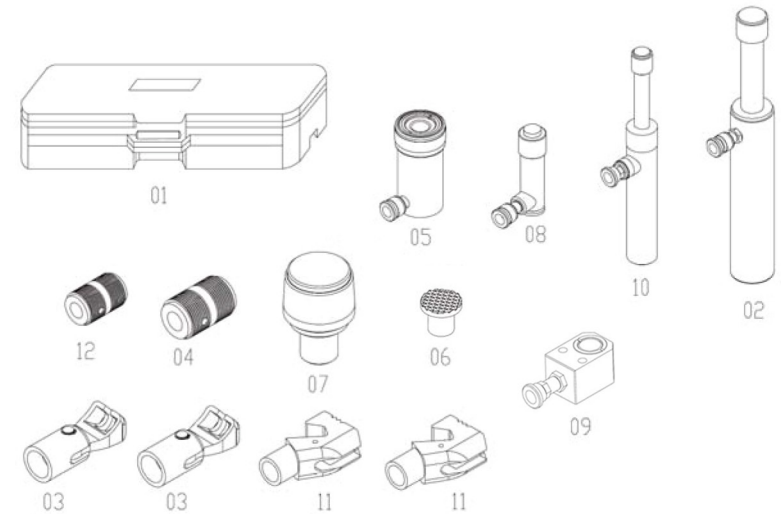
Part #: 14890-02
Model 686: 5 Ton Pull Ram



Part No.	Description	Q'TY	Part No.	Description	Q'TY
686-01	Cylinder	1	686-13	Nut	1
686-02	O-Ring	1	686-14	Screw	1
686-03	Backup Ring	1	686-15	Cap	1
686-04	Seal	1	686-16	Coupling	1
686-05	Ram	1	686-17	Washer	1
686-06	Snap Ring	1	686-18	Backup Ring	1
686-07	Seal	1	686-20	Male Connector	1
686-08	Bushing	1	686-21	Adapter	2
686-09	Bearing	1	686-22	Pin	2
686-10	Spring	1	686-23	C-Clip	4
686-11	Thimble	1	686-24	Claw	2
686-12	Nut	1	86140	Ram Coupler	1

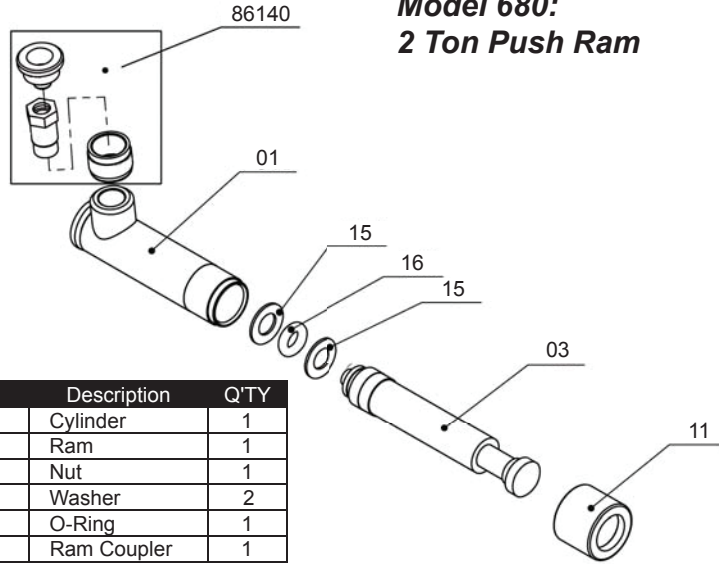


MODEL 14890
Push & Pull Ram Set



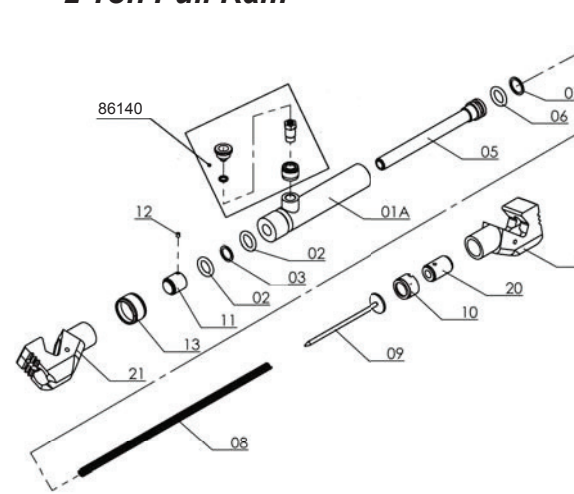
Part No	Description	Q'TY
14890-01	PLASTIC BOX	1
14890-02	5 TON PULL RAM	1
14890-03	CHAIN HOOK	2
14890-04	MALE CONNECTOR 1 1/4"	1
14890-05	10 TON PUSH RAM	1
14890-06	END CAP	1
14890-07	MALE ADAPTER	1
14890-08	2 TON PUSH RAM	1
14890-09	4 TON PUSH RAM	1
14890-10	2 TON PULL RAM	1
14890-11	PULL RAM CONNECTOR	2
14890-12	MALE CONNECTOR 3/4"	1

**Part # 14890-08
Model 680:
2 Ton Push Ram**



Part No.	Description	Q'TY
680-01	Cylinder	1
680-03	Ram	1
680-11	Nut	1
680-15	Washer	2
680-16	O-Ring	1
86140	Ram Coupler	1

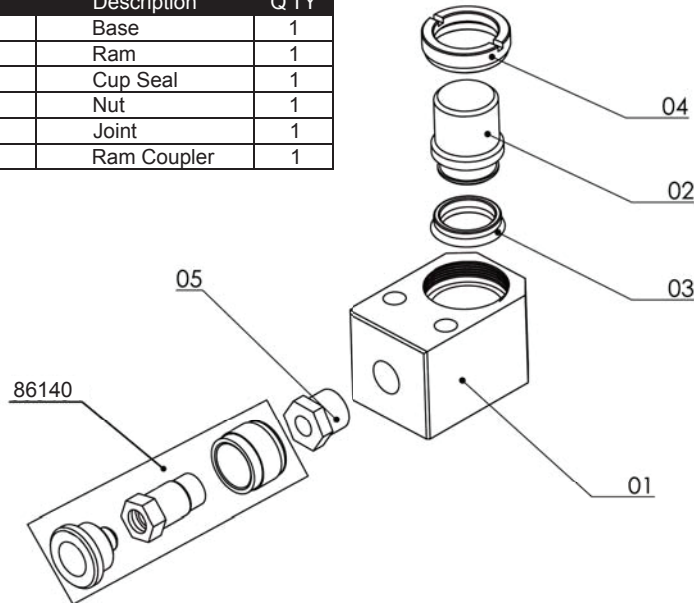
**Part # 14890-10
Model 682:
2 Ton Pull Ram**



Part No.	Description	Q'TY
682-01A	Cylinder	1
682-02	O-Ring	2
682-03	Back-Up Ring	1
682-05	Ram	1
682-06	O-Ring	1
682-07	Back-Up Ring	1
682-08	Spring	1
682-09	Thimble	1
682-10	Nut	1
682-11	Nut	1
682-12	Screw	1
682-13	Cap	1
682-20	Male Connector	1
682-21	Pull Ram Connector	2
86140	Ram Coupler	1

**Part # 14890-09
Model 678: 4 Ton Push Ram**

Part No.	Description	Q'TY
648-01	Base	1
648-02	Ram	1
648-03	Cup Seal	1
648-04	Nut	1
648-05	Joint	1
86140	Ram Coupler	1



**Part # 14890-05
Model 688:
10 Ton Push Ram**

Part No.	Description	Q'TY
688-01B	Cylinder	1
688-02B	Ram	1
688-03	Bearing	1
688-04	Bushing	1
688-05	Bearing	1
688-06	Bushing	1
688-07	Snap Ring	1
688-08B	Spring	1
688-09	Screw	1
688-10	Screw	1
688-11B	Nut	1
688-12	Cap	1
688-13	Saddle	1
688-14	Nut	1
688-18	Seal	1
688-19	Back-Up Ring	1
86140	Ram Coupler	1

